

FOCALPOINT HP PERFORMANCE SPECIFICATION:

HIGH PERFORMANCE MEDIA

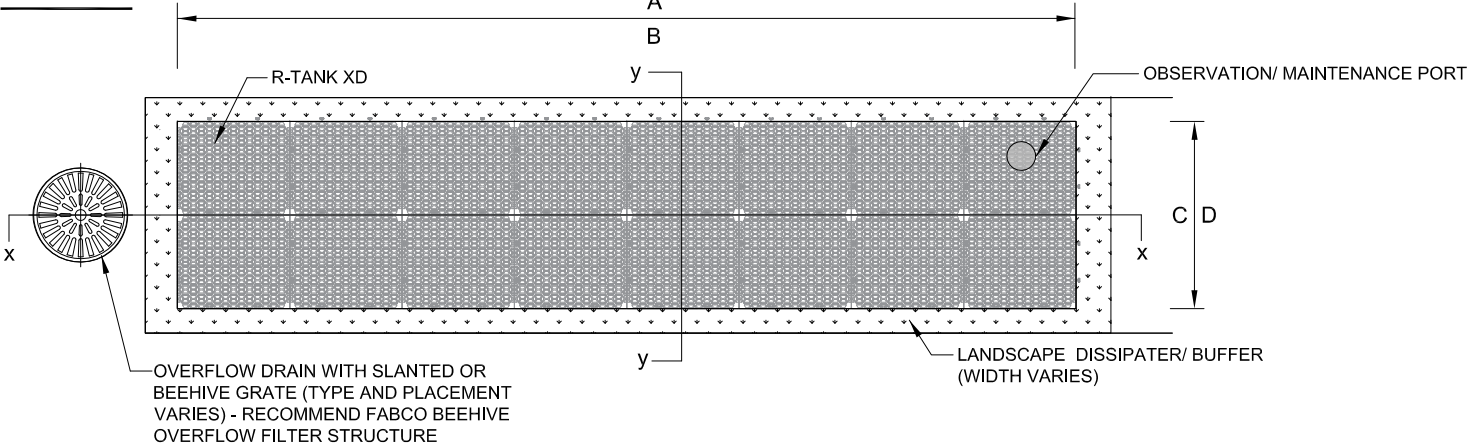
HIGH PERFORMANCE MEDIA MUST MEET A MINIMUM OF 100" PER HOUR INFILTRATION RATE.
FIELD HYDRAULIC CONDUCTIVITY TESTING MUST BE CONDUCTED WITHIN 30 DAYS OF INSTALLATION.
FIELD TEST MUST BE CONDUCTED WITH PROSCRIBED INFILTROMETER AND SOP (SEE SPECIFICATION).
FAILURE TO MEET FIELD TESTING WILL RESULT IN THE REMOVAL OF MEDIA AND REPLACEMENT FROM ALTERNATE BATCH.

HIGH PERFORMANCE STRUCTURAL UNDERDRAIN

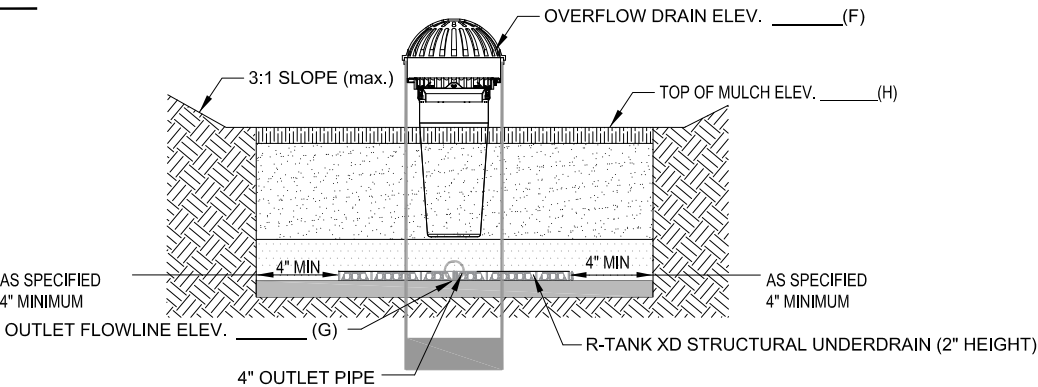
MUST HAVE A MINIMUM OF 19 SQUARE INCHES OF ORIFICE OPENING PER SQUARE FOOT.
MUST MEET H2O LOADING REQUIREMENTS.
MUST BE MODULAR IN NATURE AND ASSEMBLED ON SITE.
MUST HAVE MINIMUM 90% INTERIOR VOID SPACE.

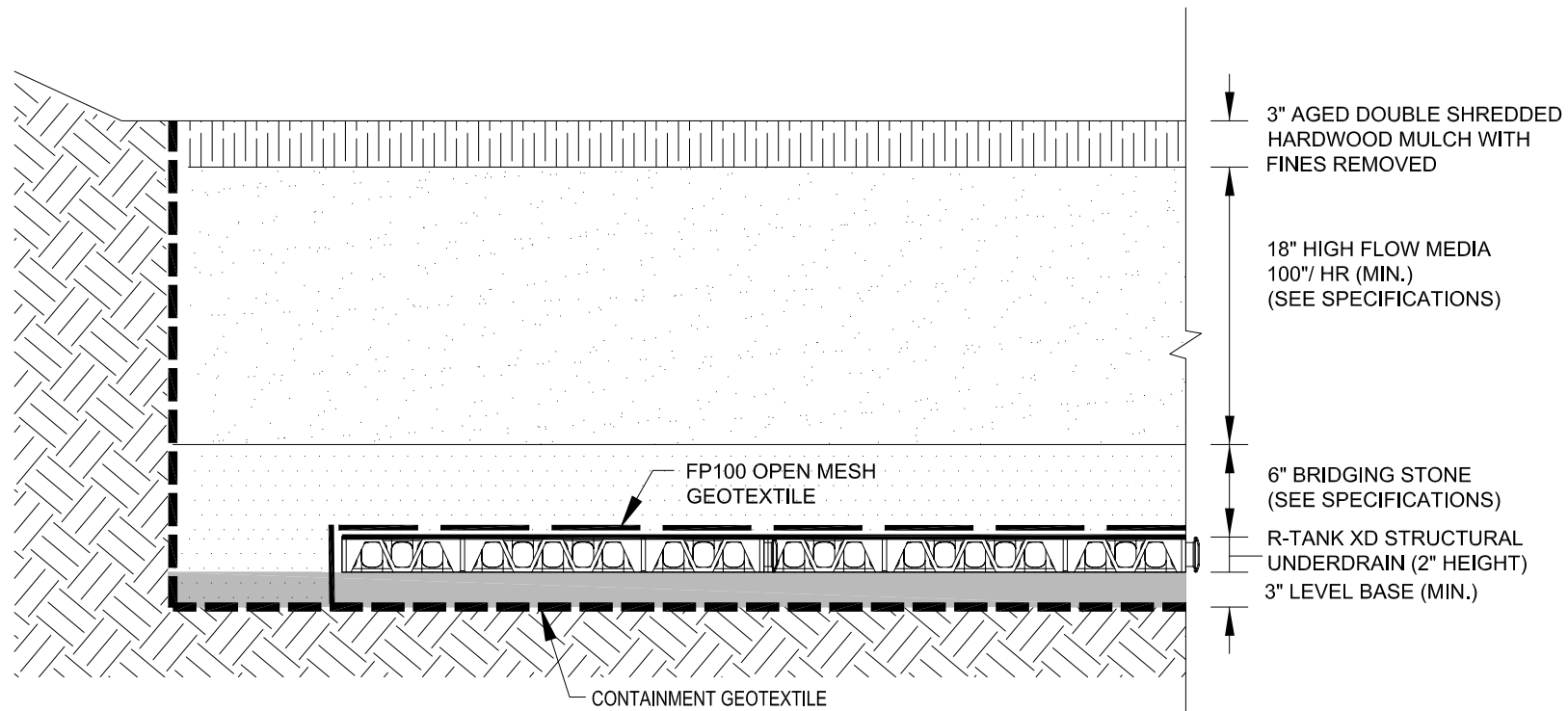
FOCALPOINT HP CONSTRUCTION GUIDE		
A	FOCALPOINT LENGTH	
B	# UNDERDRAIN LONG	
C	FOCALPOINT WIDTH	
D	# UNDERDRAIN WIDE	
E	WATER QUALITY VOLUME	
F	OVERFLOW ELEVATION	
G	OUTLET FLOWLINE	
H	TOP OF MULCH	
I	TOP OF GABION (OPTIONAL)	
J	UNDERDRAIN HEIGHT	

PLAN VIEW



SECTION Y-Y

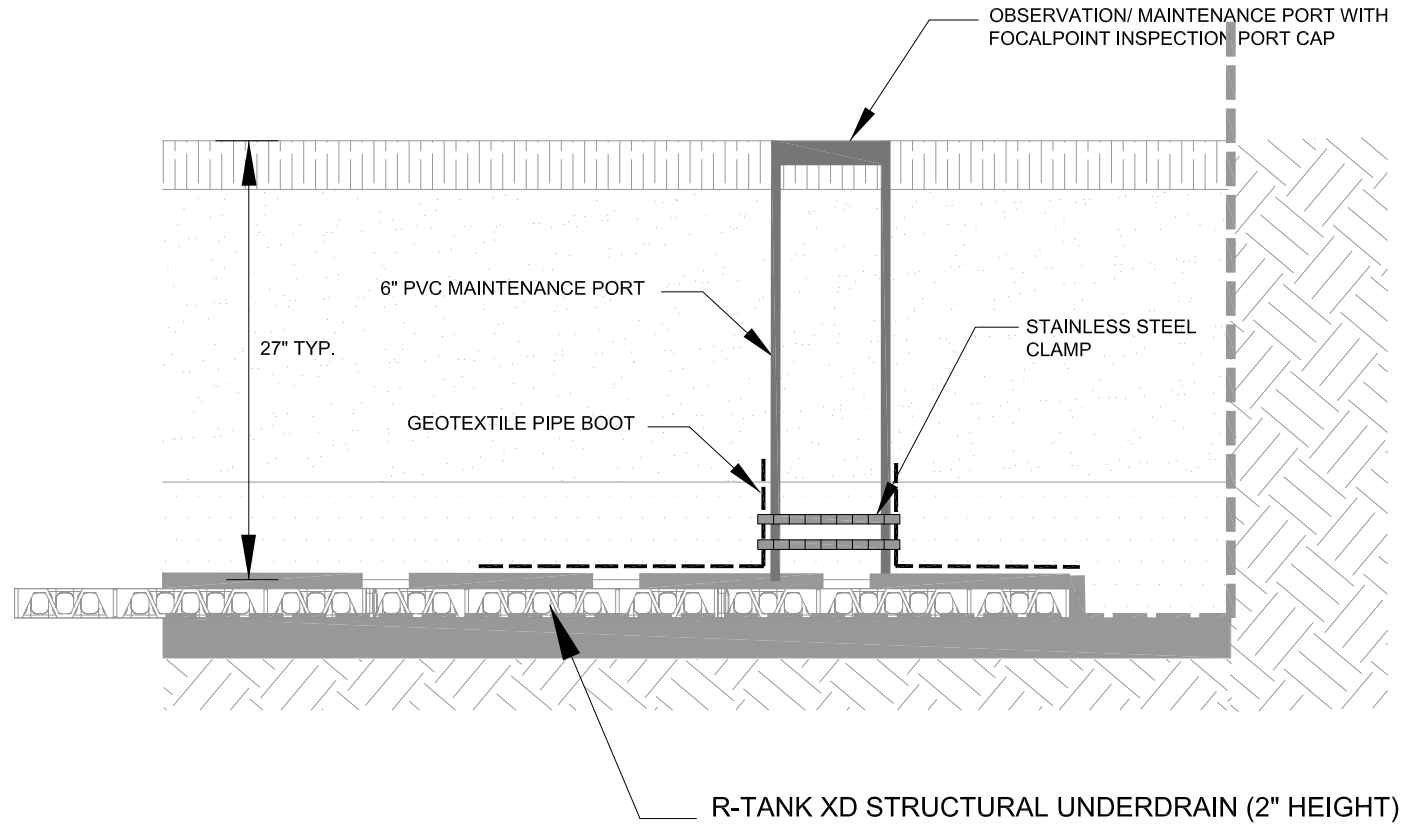




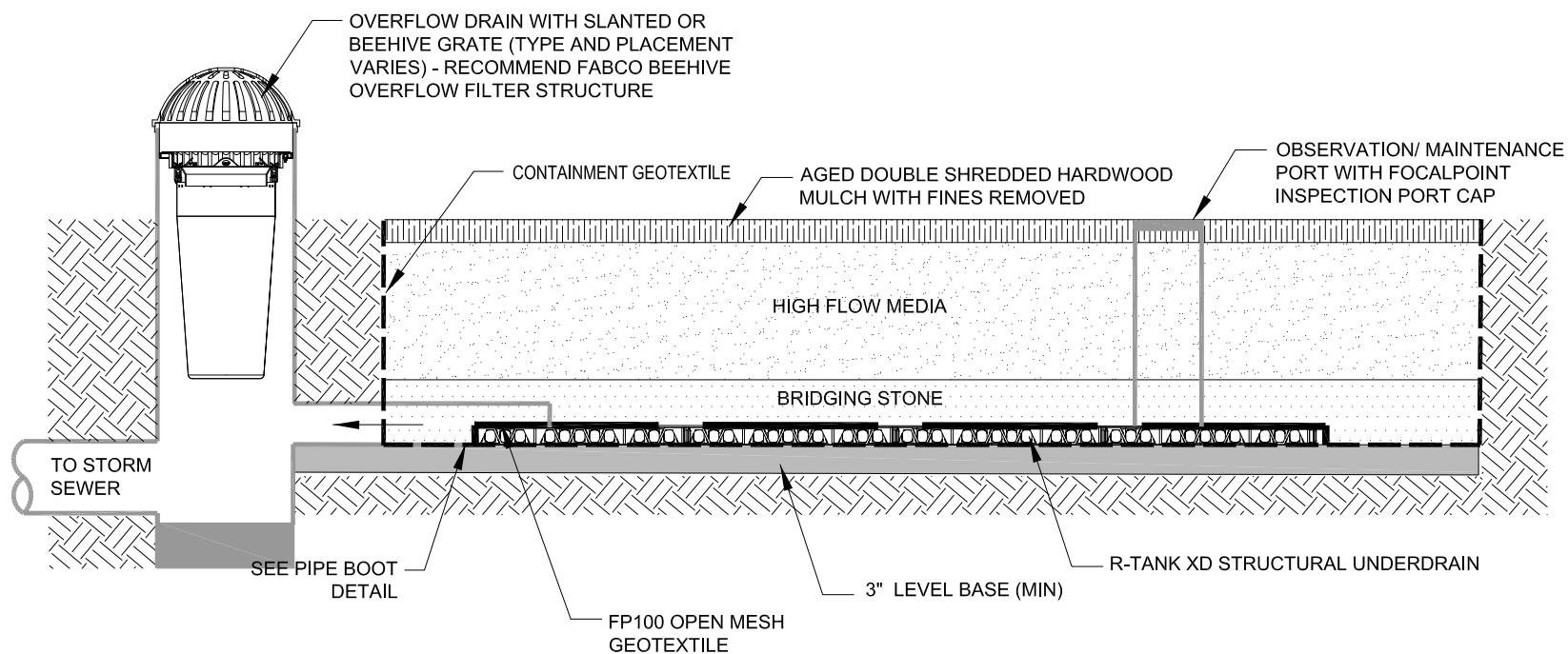
FOCALPOINT HP DETAILED CROSS SECTION W R-TANK XD

OBSERVATION/ MAINTENANCE PORT

PORT USED FOR INSPECTION PURPOSES AND FOR SYSTEM MAINTENANCE AS REQUIRED. WATER SHALL BE PUMPED INTO THE SYSTEM AND RESUSPEND ACCUMULATED SEDIMENT. MINIMUM REQUIRED MAINTENANCE INCLUDES A QUARTERLY INSPECTION FOR THE FIRST YEAR OF OPERATION AND A YEARLY INSPECTION THEREAFTER FLUSH AS NEEDED.



FOCALPOINT OBSERVATION/ MAINTENANCE PORT W R-TANK XD



FOCALPOINT HP SECTION X-X W R-TANK XD