

FOCALPOINT HIGH PERFORMANCE MODULAR BIOFILTRATION SYSTEM (HPMBS) PERFORMANCE SPECIFICATION:

HIGH PERFORMANCE MEDIA

HIGH PERFORMANCE MEDIA MUST MEET A MINIMUM OF 100" PER HOUR INFILTRATION RATE.
FIELD TEST MUST BE CONDUCTED WITH PROSCRIBED INFILTROMETER AND SOP (SEE SPECIFICATION).
FAILURE TO MEET FIELD TESTING WILL RESULT IN THE REMOVAL OF MEDIA AND REPLACEMENT FROM ALTERNATE BATCH.

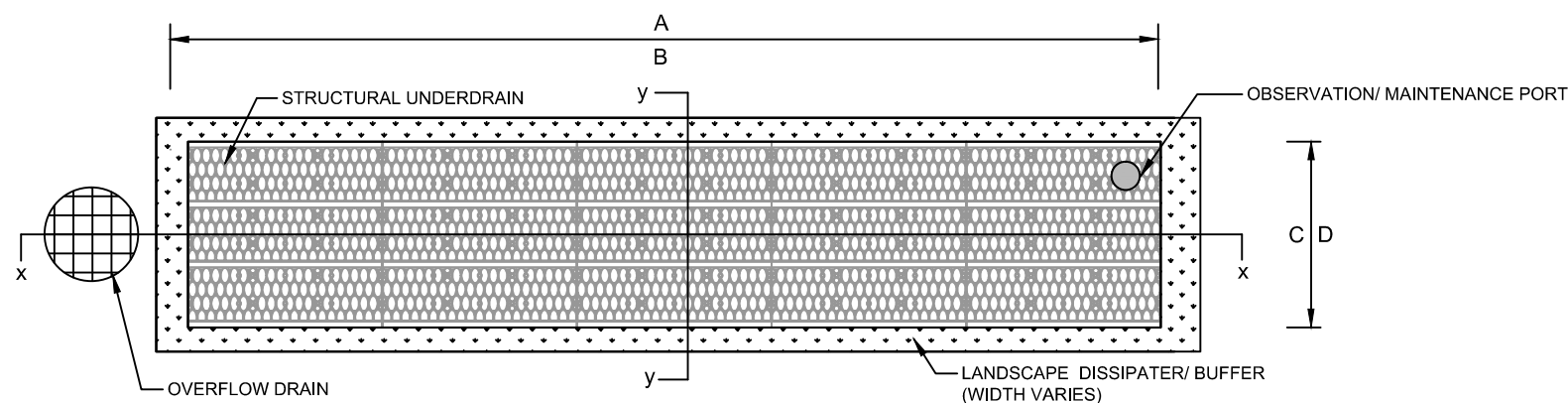
HIGH PERFORMANCE STRUCTURAL UNDERDRAIN

MUST HAVE A MINIMUM OF 19 SQUARE INCHES OF ORIFICE OPENING PER SQUARE FOOT.
MUST MEET H2O LOADING REQUIREMENTS.
MUST BE MODULAR IN NATURE AND ASSEMBLED ON SITE.
MUST HAVE MINIMUM 90% INTERIOR VOID SPACE.

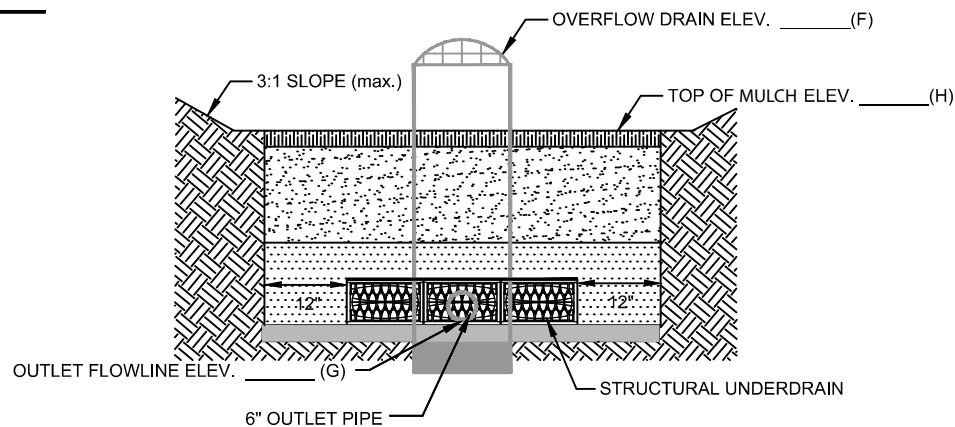
FOCALPOINT HPMBS CONSTRUCTION GUIDE

A	FOCALPOINT LENGTH	
B	# UNDERDRAIN LONG	
C	FOCALPOINT WIDTH	
D	# UNDERDRAIN WIDE	
E	WATER QUALITY VOLUME	
F	OVERFLOW ELEVATION	
G	OUTLET FLOWLINE	
H	TOP OF MULCH	
I	TOP OF GABION (OPTIONAL)	

PLAN VIEW



SECTION Y-Y

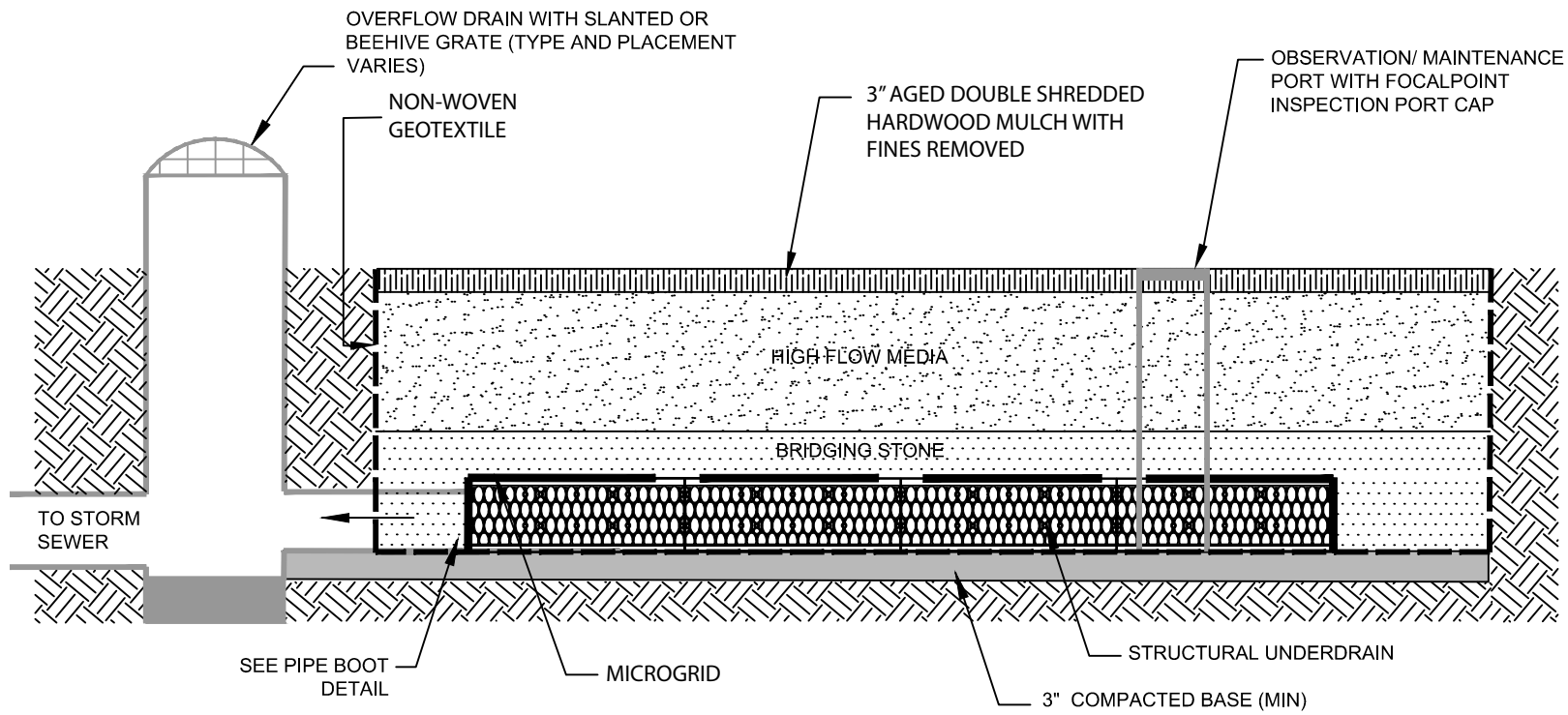


FOCALPOINT HPMBS CONSTRUCTION GUIDE

TO FIND A VALUE ADDED RESELLER IN YOUR AREA VISIT
WWW.CONVERGENTWATER.COM/STORMWATER-PRODUCTS OR CONTACT
CONVERGENT WATER TECHNOLOGIES AT 800.771.5428

CONVERGENT
WATER TECHNOLOGIES

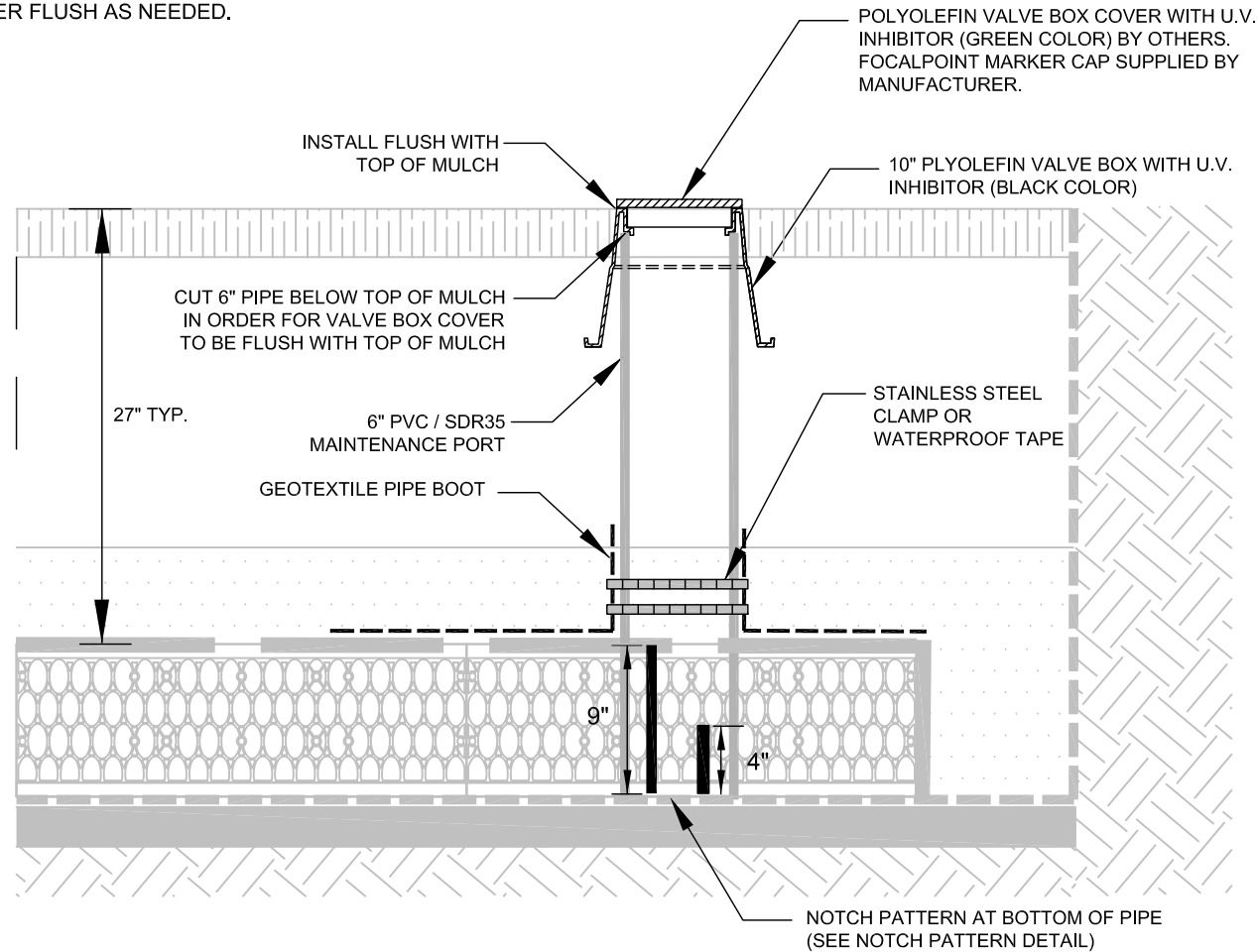
FocalPoint
BIOFILTRATION SYSTEMS



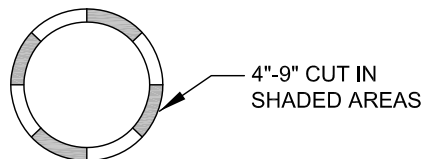
FOCALPOINT HPMBs SECTION X-X

OBSERVATION/ MAINTENANCE PORT

PORT USED FOR INSPECTION PURPOSES AND FOR SYSTEM MAINTENANCE AS REQUIRED. WATER SHALL BE PUMPED INTO THE SYSTEM AND RESUSPEND ACCUMULATED SEDIMENT. MINIMUM REQUIRED MAINTENANCE INCLUDES A QUARTERLY INSPECTION FOR THE FIRST YEAR OF OPERATION AND A YEARLY INSPECTION THEREAFTER FLUSH AS NEEDED.



PIPE NOTCH PATTERN DETAIL



FOCALPOINT OBSERVATION/ MAINTENANCE PORT

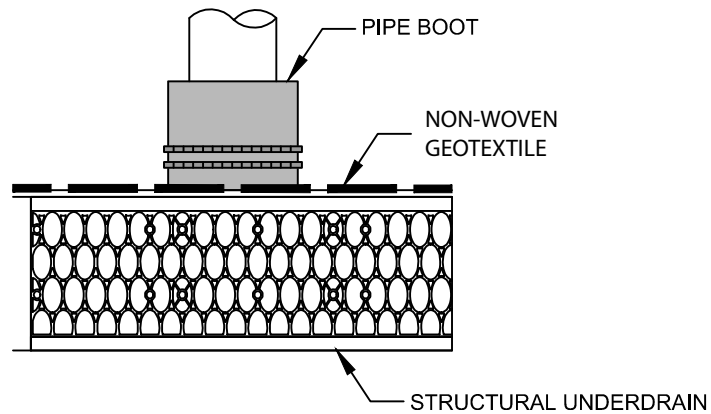
TO FIND A VALUE ADDED RESELLER IN YOUR AREA VISIT
WWW.CONVERGENTWATER.COM/STORMWATER-PRODUCTS
OR CONTACT CONVERGENT WATER TECHNOLOGIES AT
1.800.771.5428

CONVERGENT
WATER TECHNOLOGIES

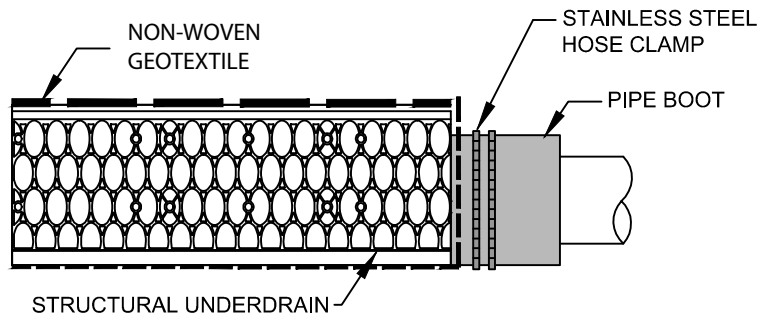
FocalPoint
BIOFILTRATION SYSTEMS

REVISED
JULY 2021

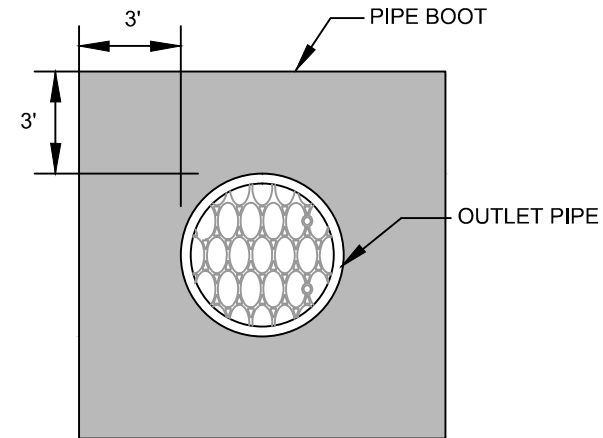
OBSERVATION/ MAINTENANCE PORT CONNECTION



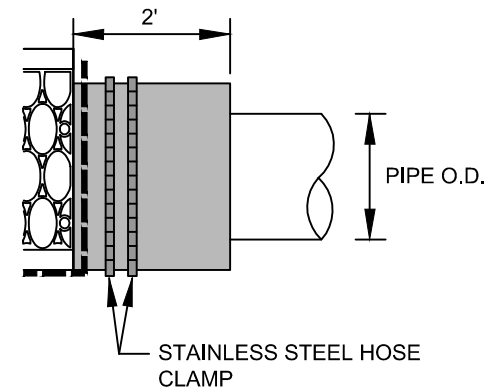
OUTLET/ INLET PIPE CONNECTION



PIPE BOOT DETAIL



FRONT VIEW



SIDE VIEW

FOCALPOINT HPMB5 PIPE CONNECTION

TO FIND A VALUE ADDED RESELLER IN YOUR AREA VISIT

WWW.CONVERGENTWATER.COM/STORMWATER-PRODUCTS OR CONTACT

CONVERGENT WATER TECHNOLOGIES AT 800.771.5428

CONVERGENT
WATER TECHNOLOGIES

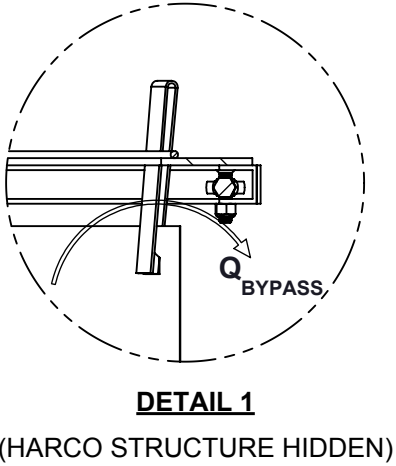
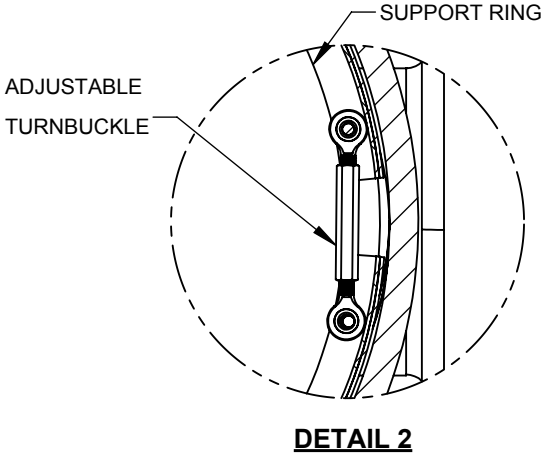
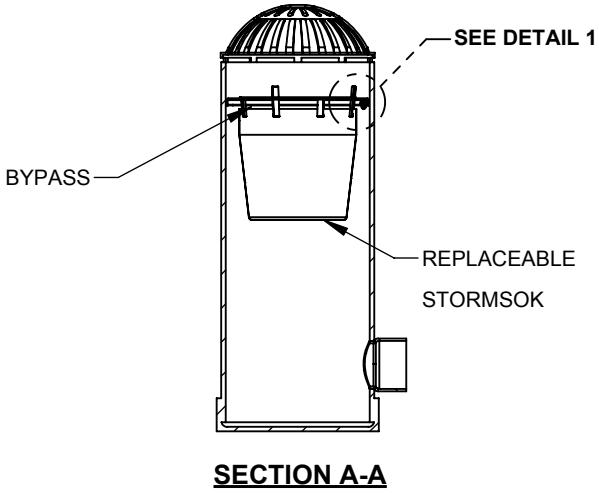
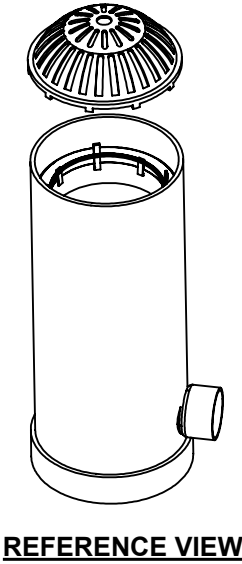
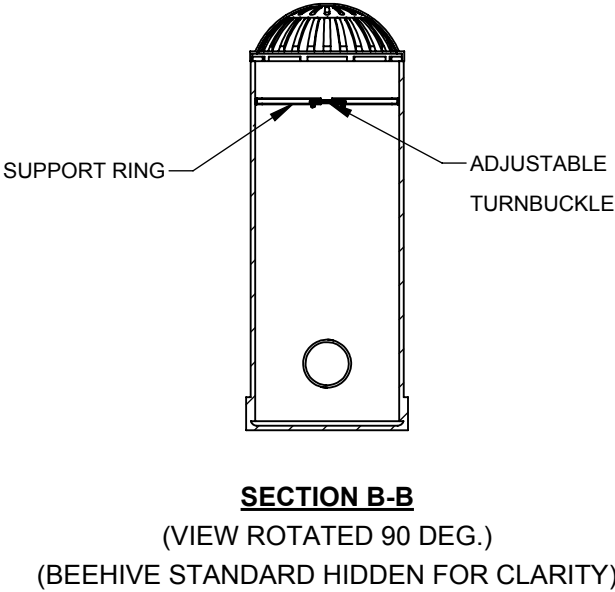
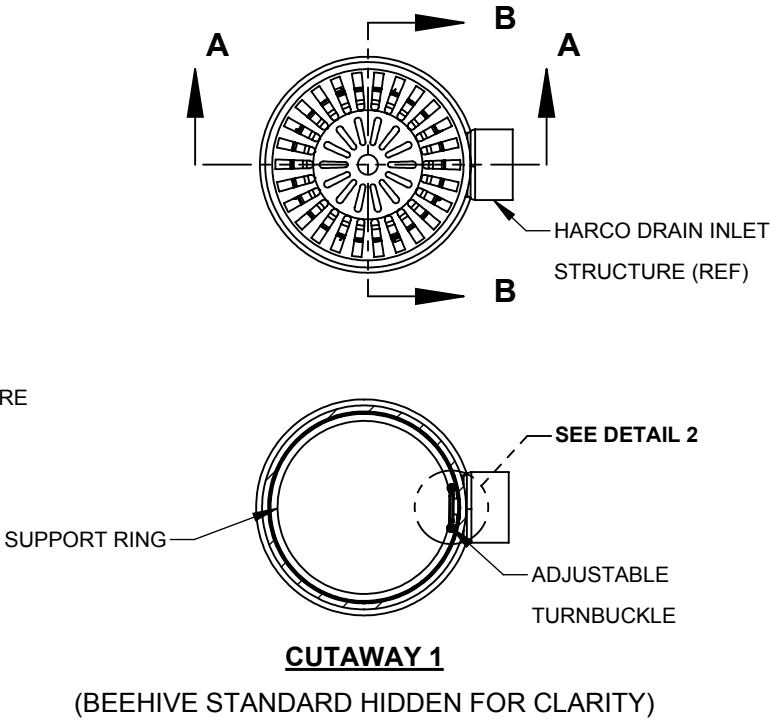
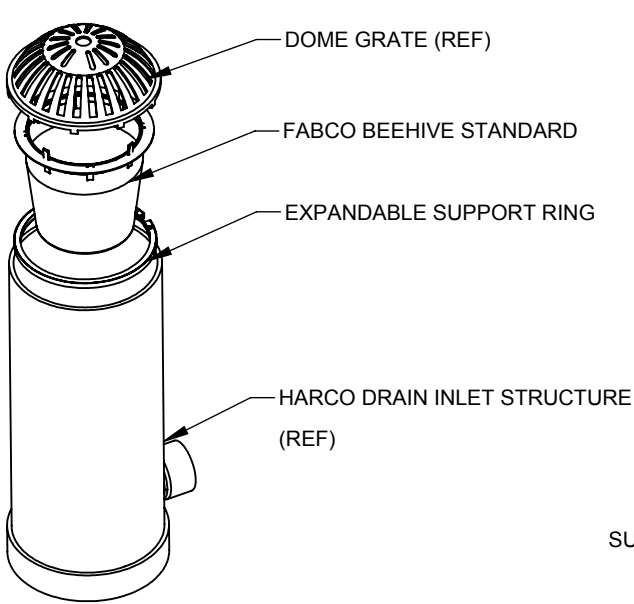
FocalPoint
BIOFILTRATION SYSTEMS

- NOTES:
- 1. MATERIAL:
 - A) SUPPORT FLANGE: ALUMINUM ALLOY PLATE, 5000 SERIES
 - B) STORMSOK: WOVEN POLYPROPYLENE GEOTEXTILE
 - C) EXPANSION RING: ALUMINUM ALLOY CHANNEL, 6000 SERIES
 - D) HARDWARE: STAINLESS STEEL
 - 2. RECOMMENDED MINIMUM VAULT DEPTH: 2-IN BELOW STORMSOK
 - 3. USE ONLY WITH FABCO REPLACEABLE STORMSOK

GENERAL INSTALLATION:

ADJUST THE TURNBUCKLE DOWN TO GIVE THE SMALLEST RING DIAMETER AND LOCATE THE EXPANSION RING INTO THE HARCO STRUCTURE MINIMUM OF 6-IN DOWN FROM THE TOP OPENING AS SHOWN. BEGIN OPENING THE TURNBUCKLE UNTIL THE EXPANSION RING IS SELF SUPPORTING, THEN VERIFY THE RING IS LEVEL AND PLUMB TO THE HARCO STRUCTURE. USING A CALIBRATED TORQUE WRENCH, CONTINUE TO OPEN THE TURNBUCKLE TO GIVEN TORQUE (MODEL-SPECIFIC). DO NOT OVER TIGHTEN. INSTALL THE STORMSACK ASSEMBLY DIRECTLY ON THE SUPPORT RING.

STRUCTURE DIAMETER (IN.)	DEBRIS CAPACITY (CU. FT)	FILTERED FLOWRATE (CFS)	BYPASS FLOWRATE (CFS)
12	0.66	1.7	1.0
15	1.0	2.1	1.3
18	1.2	2.3	1.4
24	2.8	3.9	2.2
30	2.8	3.9	2.2



FABCO BEEHIVE STANDARD OVERFLOW FILTER STRUCTURE DETAILS