

# FOCALPOINT HIGH PERFORMANCE MODULAR BIOFILTRATION SYSTEM (HPMBS) PERFORMANCE SPECIFICATION:

## HIGH PERFORMANCE MEDIA

HIGH PERFORMANCE MEDIA MUST MEET A MINIMUM OF 100" PER HOUR INFILTRATION RATE.  
FIELD TEST MUST BE CONDUCTED WITH PROSCRIBED INFILTROMETER AND SOP (SEE SPECIFICATION).  
FAILURE TO MEET FIELD TESTING WILL RESULT IN THE REMOVAL OF MEDIA AND REPLACEMENT FROM ALTERNATE BATCH.

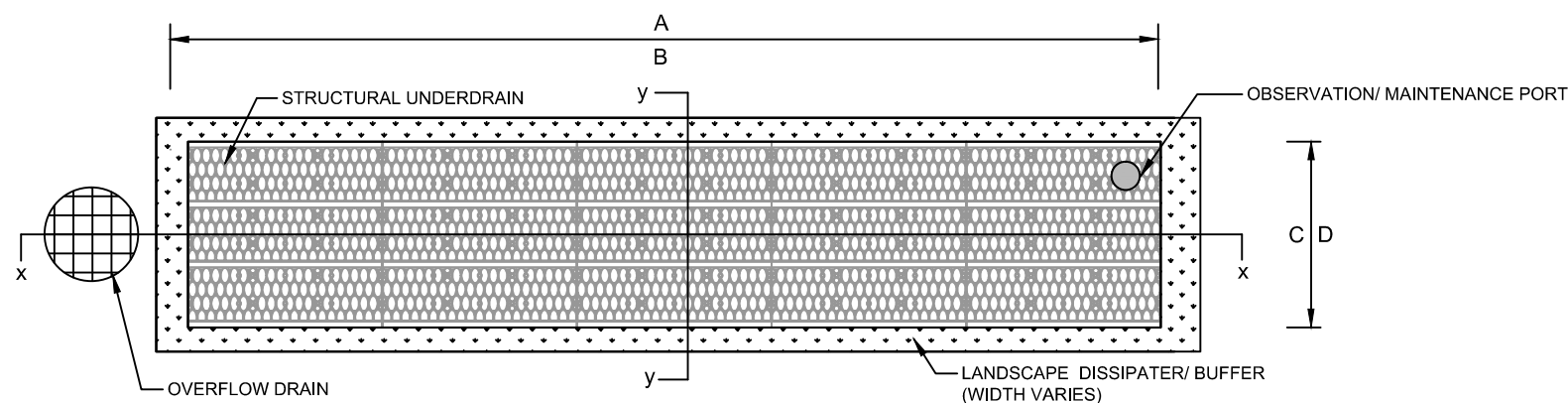
## HIGH PERFORMANCE STRUCTURAL UNDERDRAIN

MUST HAVE A MINIMUM OF 19 SQUARE INCHES OF ORIFICE OPENING PER SQUARE FOOT.  
MUST MEET H2O LOADING REQUIREMENTS.  
MUST BE MODULAR IN NATURE AND ASSEMBLED ON SITE.  
MUST HAVE MINIMUM 90% INTERIOR VOID SPACE.

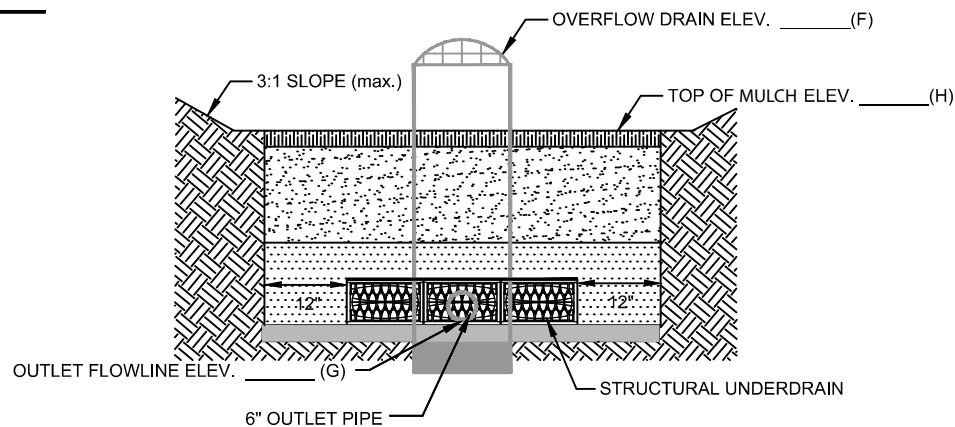
## FOCALPOINT HPMBS CONSTRUCTION GUIDE

A	FOCALPOINT LENGTH	
B	# UNDERDRAIN LONG	
C	FOCALPOINT WIDTH	
D	# UNDERDRAIN WIDE	
E	WATER QUALITY VOLUME	
F	OVERFLOW ELEVATION	
G	OUTLET FLOWLINE	
H	TOP OF MULCH	
I	TOP OF GABION (OPTIONAL)	

## PLAN VIEW



## SECTION Y-Y



## FOCALPOINT HPMBS CONSTRUCTION GUIDE

TO FIND A VALUE ADDED RESELLER IN YOUR AREA VISIT  
[WWW.CONVERGENTWATER.COM/STORMWATER-PRODUCTS](http://WWW.CONVERGENTWATER.COM/STORMWATER-PRODUCTS) OR CONTACT  
CONVERGENT WATER TECHNOLOGIES AT 800.771.5428

**CONVERGENT**  
WATER TECHNOLOGIES

**FocalPoint**  
BIOFILTRATION SYSTEMS