

## SMARTPOND SLIDE GATE INSTALLATION GUIDE

The smartPOND slide gate may be installed in a near-completely assembled configuration. The gate mounts on the interior wall of a concrete manhole, and the remote cabinet may be located anywhere within 50-100 feet of the gate. Wire will be run between the gate and the cabinet, so close proximity is always better, if possible.

### There are three primary assemblies to the system:

1. Slide gate assembly
2. Control cabinet
3. Electronics kit with solar panel and battery

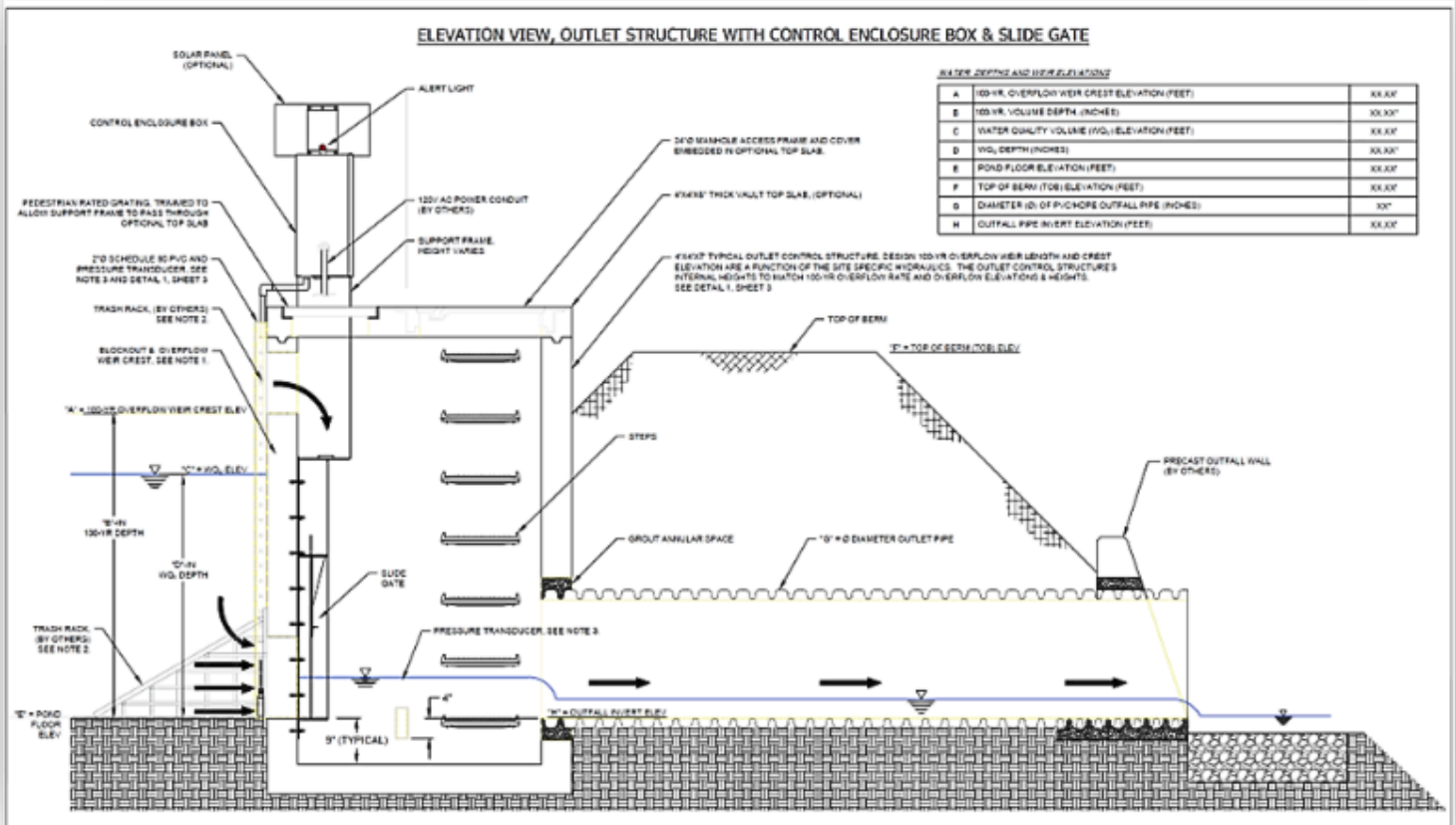
### TOOLS, EQUIPMENT, AND MATERIALS REQUIRED

- Excavator or front-end loader equipment to carry the assemblies to the installation location
- Concrete hammer drill to anchor the slide gate to the concrete wall and mount the cabinet base
- Socket set
- Silt fence to protect from erosion during active construction
- Geotextile to stabilize disturbed soil areas
- 1" Wire conduit

Note: this list does not include required tools and equipment to pour the required concrete pad and backfill the berm after assembly of the vault.



# SMARTPOND SLIDE GATE INSTALLATION GUIDE



## INSTALLATION

1. Ensure that proper excavation and earth work is complete prior to installing the SmartPOND rotary weir
2. Surrounding soils should be stabilized or covered



# SMARTPOND SLIDE GATE INSTALLATION GUIDE

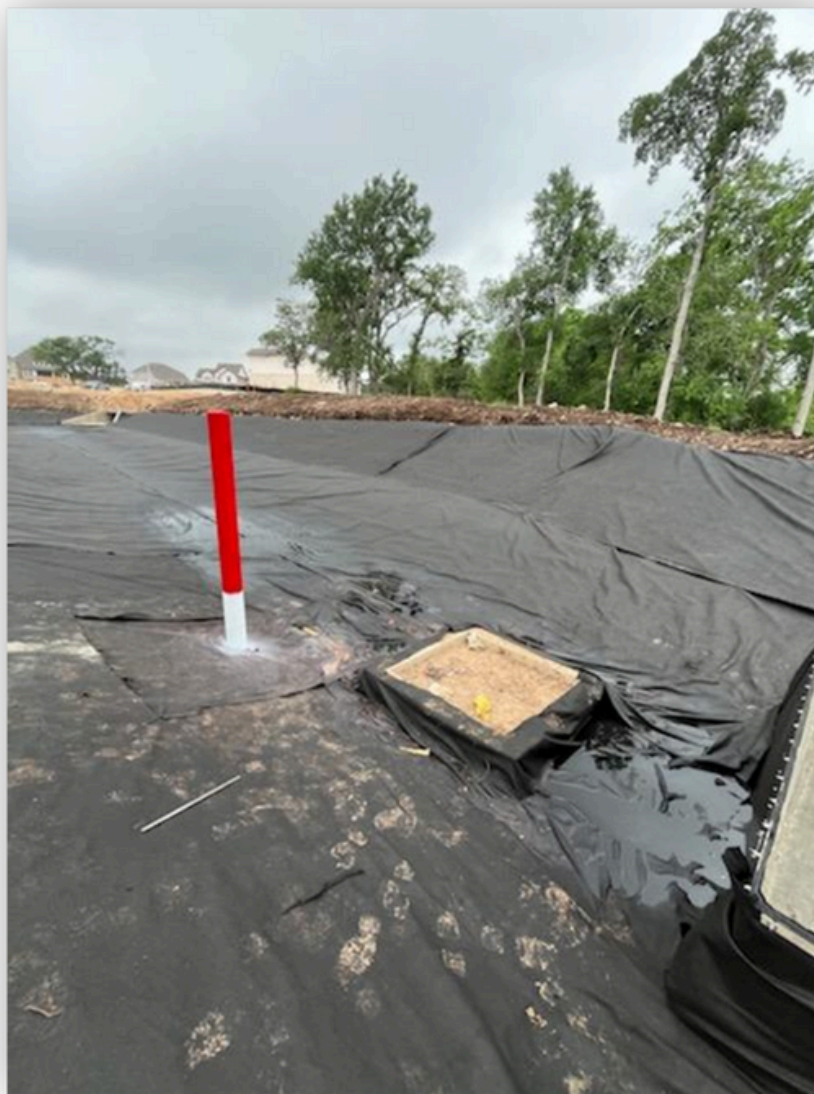


## INSTALLATION

1. Ensure the concrete manhole intended to house the slide gate is properly installed and a sufficient orifice is knocked out to facilitate required drainage. The orifice inlet and outlet should not restrict below the required flow capacity of the system.
2. Surrounding soils should be stabilized or covered



## SMARTPOND SLIDE GATE INSTALLATION GUIDE



3. Using a lift strap, lower the slide gate into position on the outlet side of the inlet wall, inside the manhole. The linear actuator should be facing downstream or towards the outlet direction of flow.



## SMARTPOND SLIDE GATE INSTALLATION GUIDE



4. Align the slide gate's orifice with the knockout of the concrete manhole and use a hammer drill to set 3/8" anchors through the slide gate's frame. At least 3 anchors per side, and two in the bottom are required to secure the gate.



## SMARTPOND SLIDE GATE INSTALLATION GUIDE



5. If necessary, use silicone to seal the outer edges of the gate's frame to the concrete wall.
6. Route the wire from the linear actuator and water level sensor to the surface. Use conduit and a spliced wire extension to bring all wires to the location of the control box.
7. The control box may be mounted in a variety of configurations. It may be mounted atop a 4'x4'x4" concrete pad on a manufacturer-supplied base or a strut rack assembled on site. It may also be pole mounted. Use appropriate fasteners to complete this step.



## SMARTPOND SLIDE GATE INSTALLATION GUIDE



8. Ensure the site is cleared of any large debris that may cause the gate to be obstructed.
9. With the control box mounted and slide gate wires routed in conduit, a manufacturer-certified technician may now be requested for activation of the device. The technician will furnish the electronics kit, battery, and solar panel to complete activation of the smartPOND slide gate and certify for warranty.