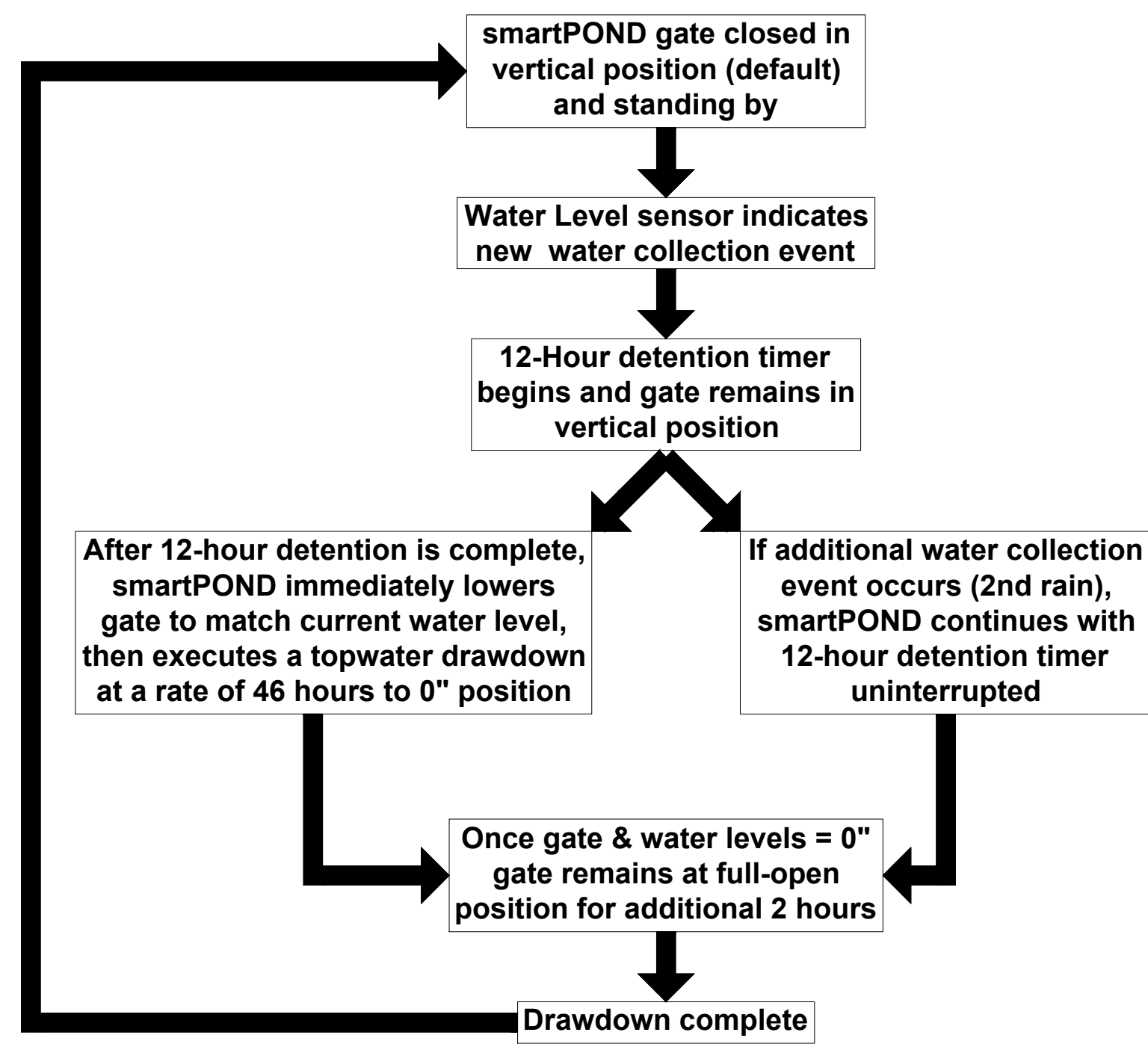
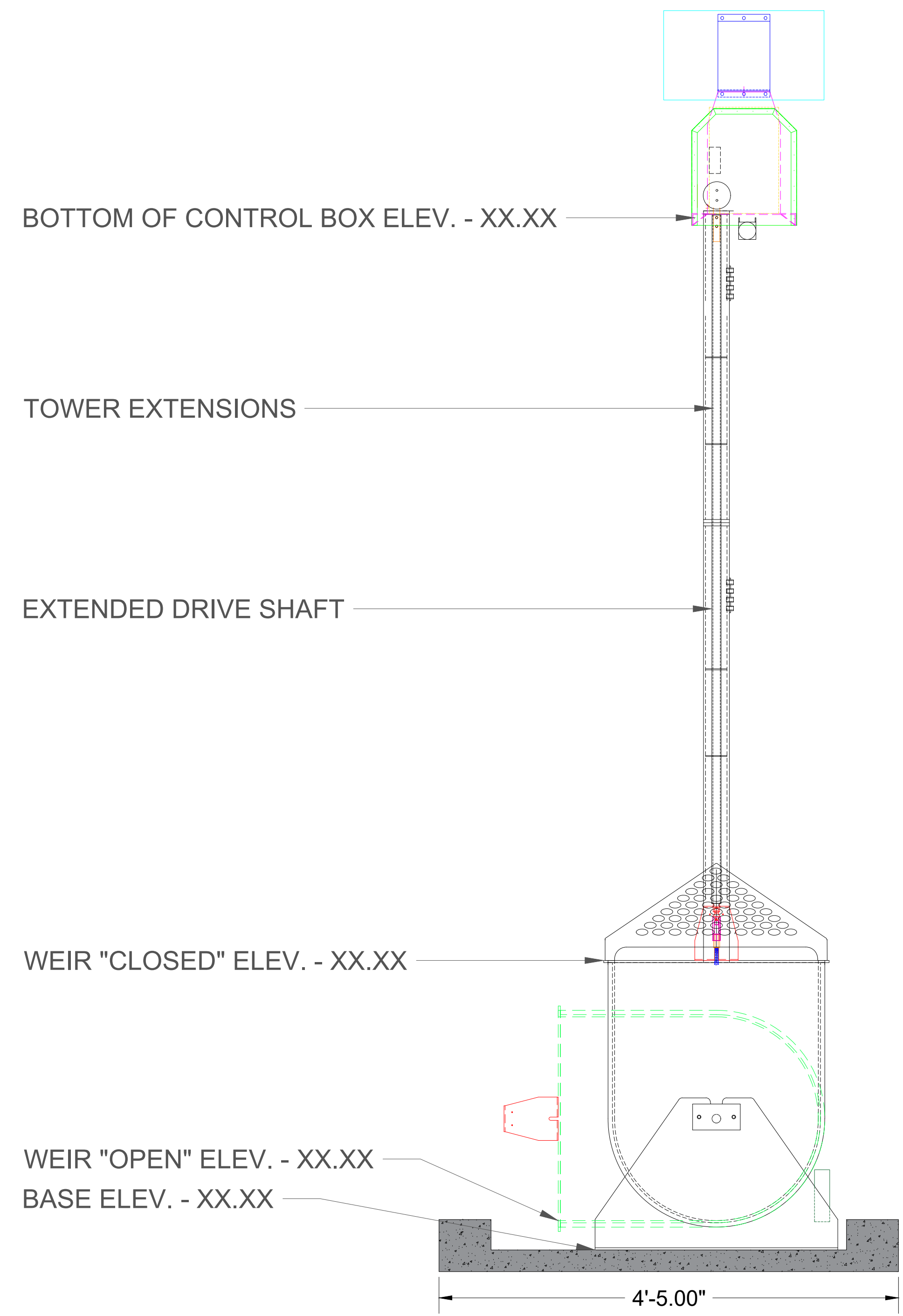


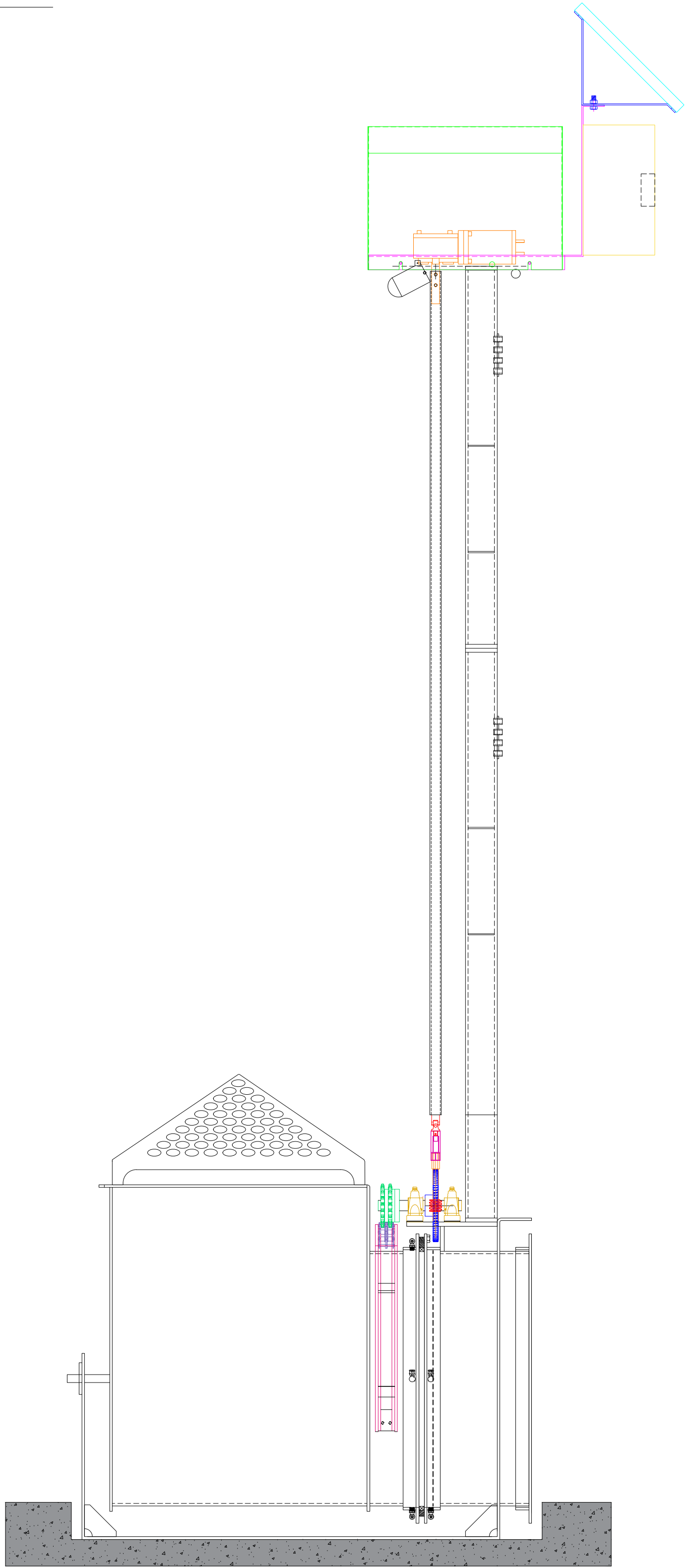
PROGRAMMABLE LOGIC FLOW CHART



FRONT VIEW



SIDE VIEW



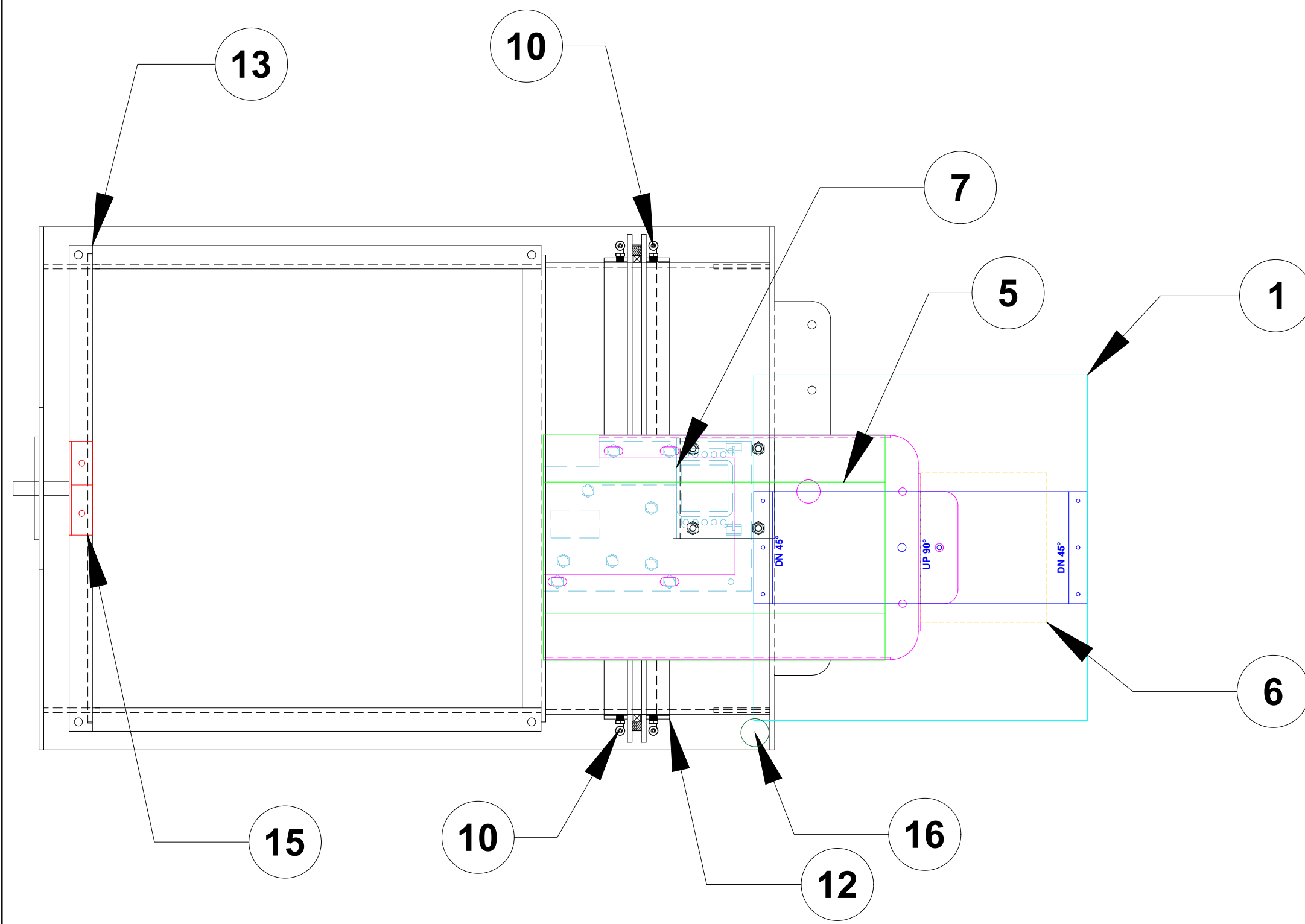
smartPOND
Automated Stormwater Control.

FOR ADDITIONAL INFORMATION PLEASE CONTACT: CONSTRUCTION ECO SERVICES, 832-456-1000, www.ecosvs.com

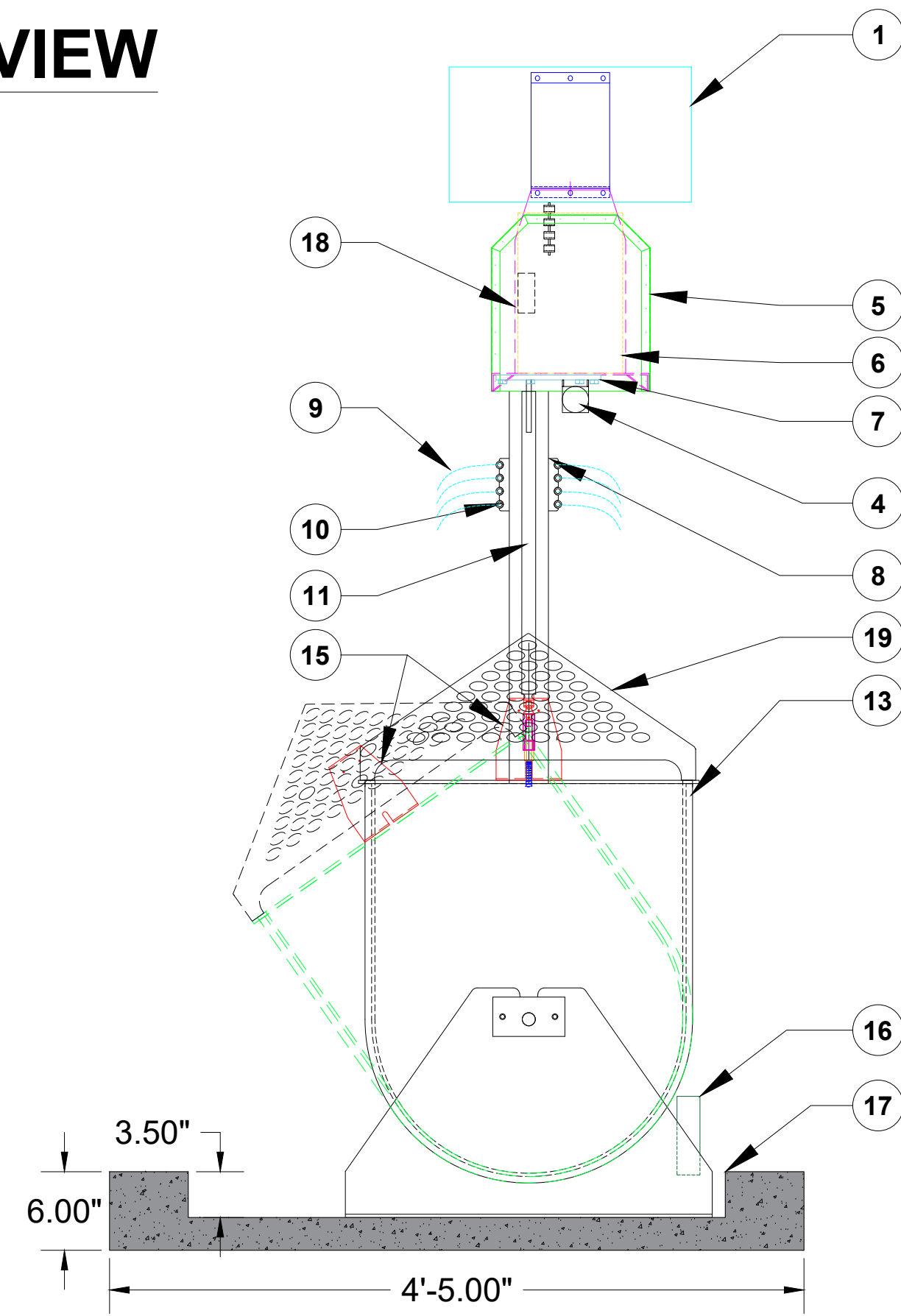


DATE OF ISSUE: 7/27/22

TOP VIEW



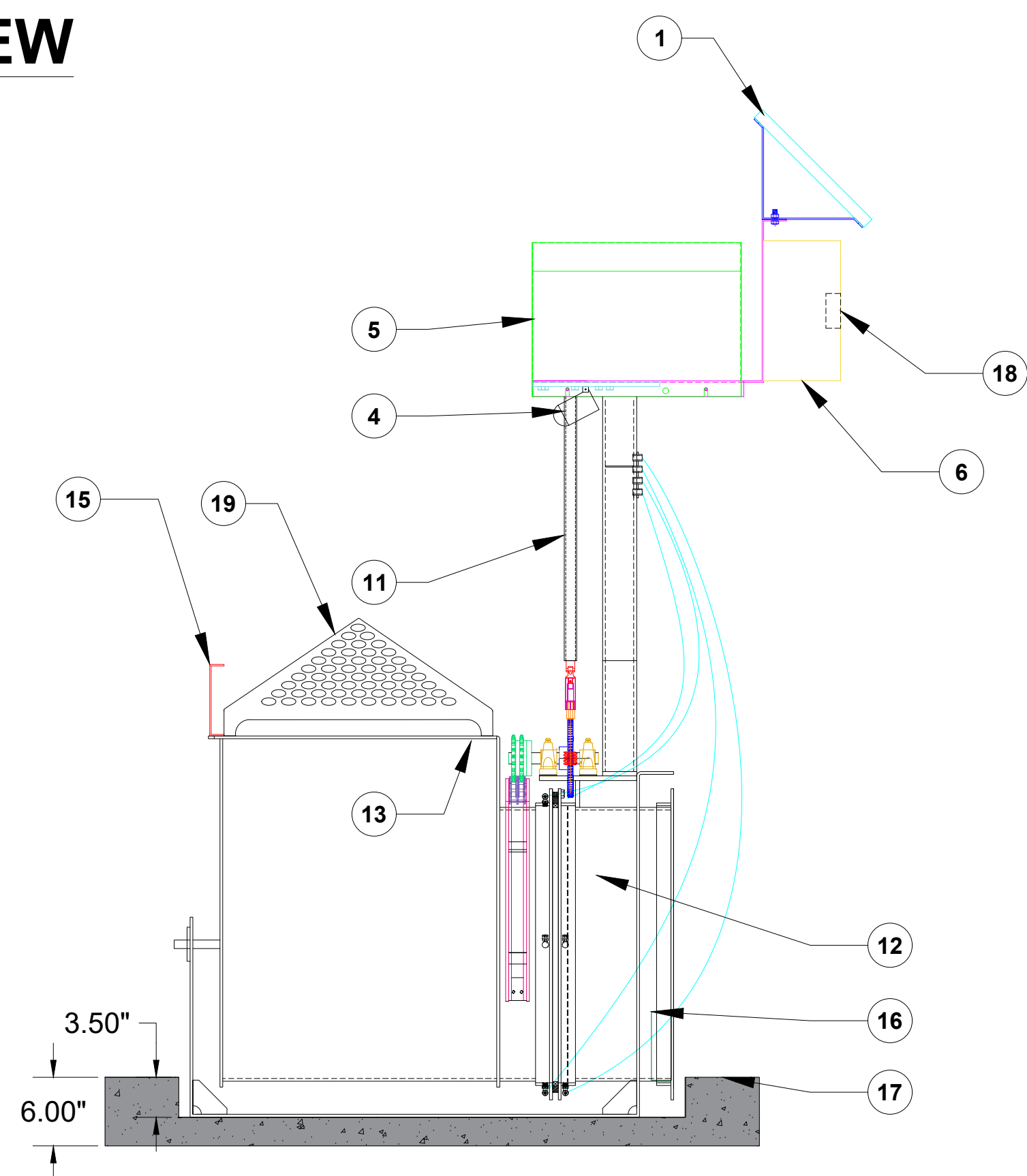
FRONT VIEW



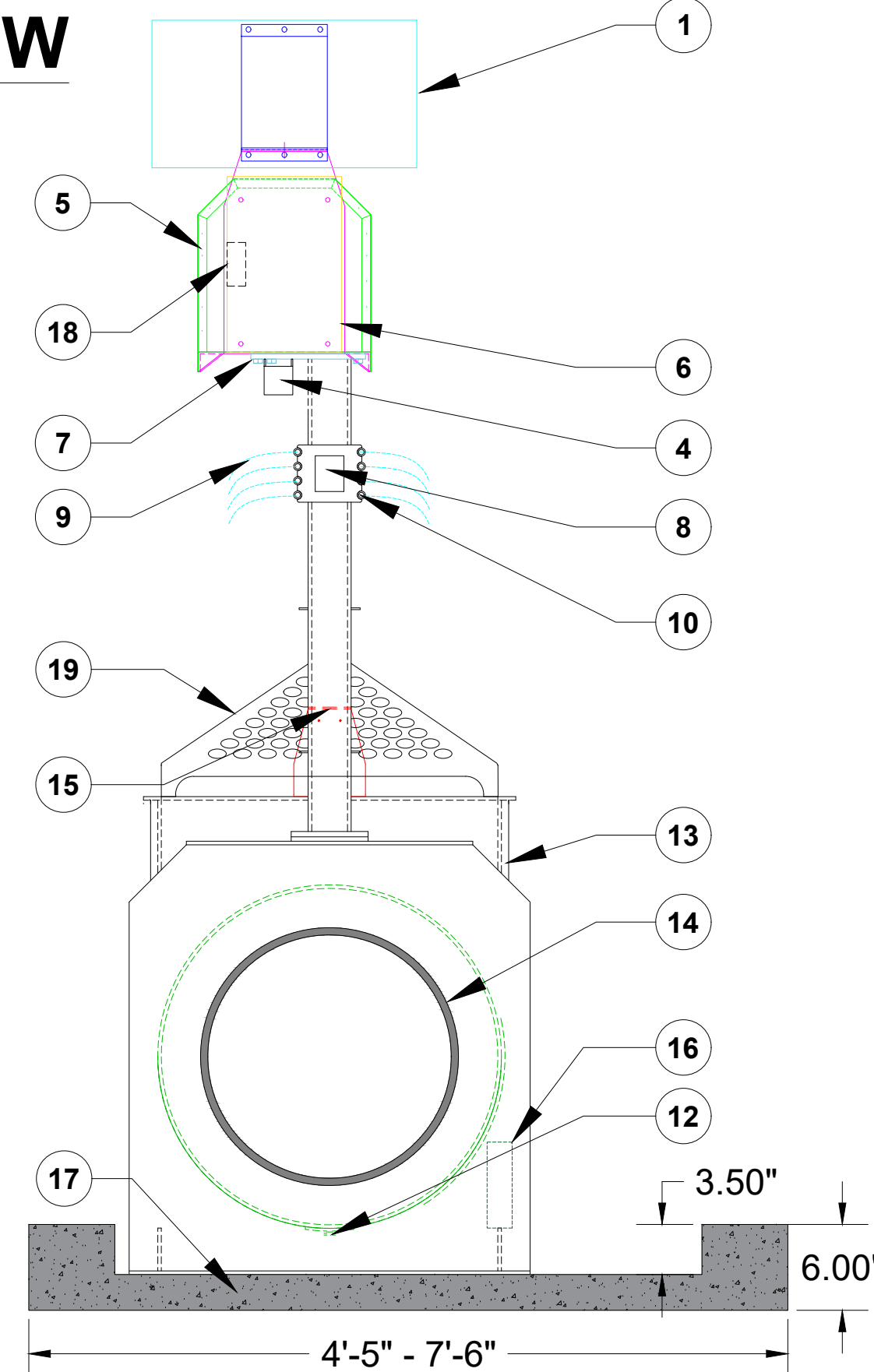
Parts List

Item	smartPOND Components
1	12 V SOLAR PANEL WITH 30 WATT CHARGING CAPACITY
2	ANTENNA (NOT DISPLAYED)
3	CELL DATA MODEM (NOT DISPLAYED)
4	CAMERA
5	LOCKABLE WEATHERPROOF ELECTRONIC BOX
6	CONTROL BOX W/ LOCKING LATCHES
7	PEDESTAL
8	REMOTE GREASE MANIFOLD
9	GREASE TUBES
10	GREASE FITTINGS
11	EXTENDED DRIVE SHAFT
12	24" Rotary Valve
13	24" Drum (30"-70" TALL)
14	Outlet Pipe (Size TBD By Engineer, Max 24")
15	Inclinometer
16	Level Transducer
17	6" Concrete Pad (By Others, Size Varies)
18	ON/OFF SWITCH
19	TRASH RACK

SIDE VIEW



BACK VIEW



NOTES:
 FOR ABOVE GROUND APPLICATIONS, THE ENTIRE SYSTEM INCLUDING ALL NECESSARY COMPONENTS FOR OPERATION ASSEMBLE INTO ONE KIT AND ARE HOUSED UNDER A SINGLE LOCKABLE STEEL ENCLOSURE WITH THE SOLAR PANEL MOUNTED ON TOP. IN THIS CONFIGURATION, THE UNIT CAN BE INSTALLED ON A STABLE, LEVEL PAD AND BE BOLTED ONTO THE BACK OF THE OUTFALL PIPE WITH SIX 3/4" BOLTS AND THEN SWITCHED TO THE "ON" POSITION.

FOR UNDERGROUND APPLICATIONS, THE VALVE IS INSTALLED IN A VAULT OR CONCRETE ENCASEMENT AS NEEDED. AN EXTENDED DRIVE SHAFT CONNECTS BETWEEN THE UNDERGROUND VALVE AND THE REST OF THE COMPONENTS, INCLUDING THE MOTOR AND ALL ELECTRONICS, WHICH ARE HOUSED IN THE LOCKABLE STEEL ENCLOSURE DIRECTLY ABOVE GROUND.



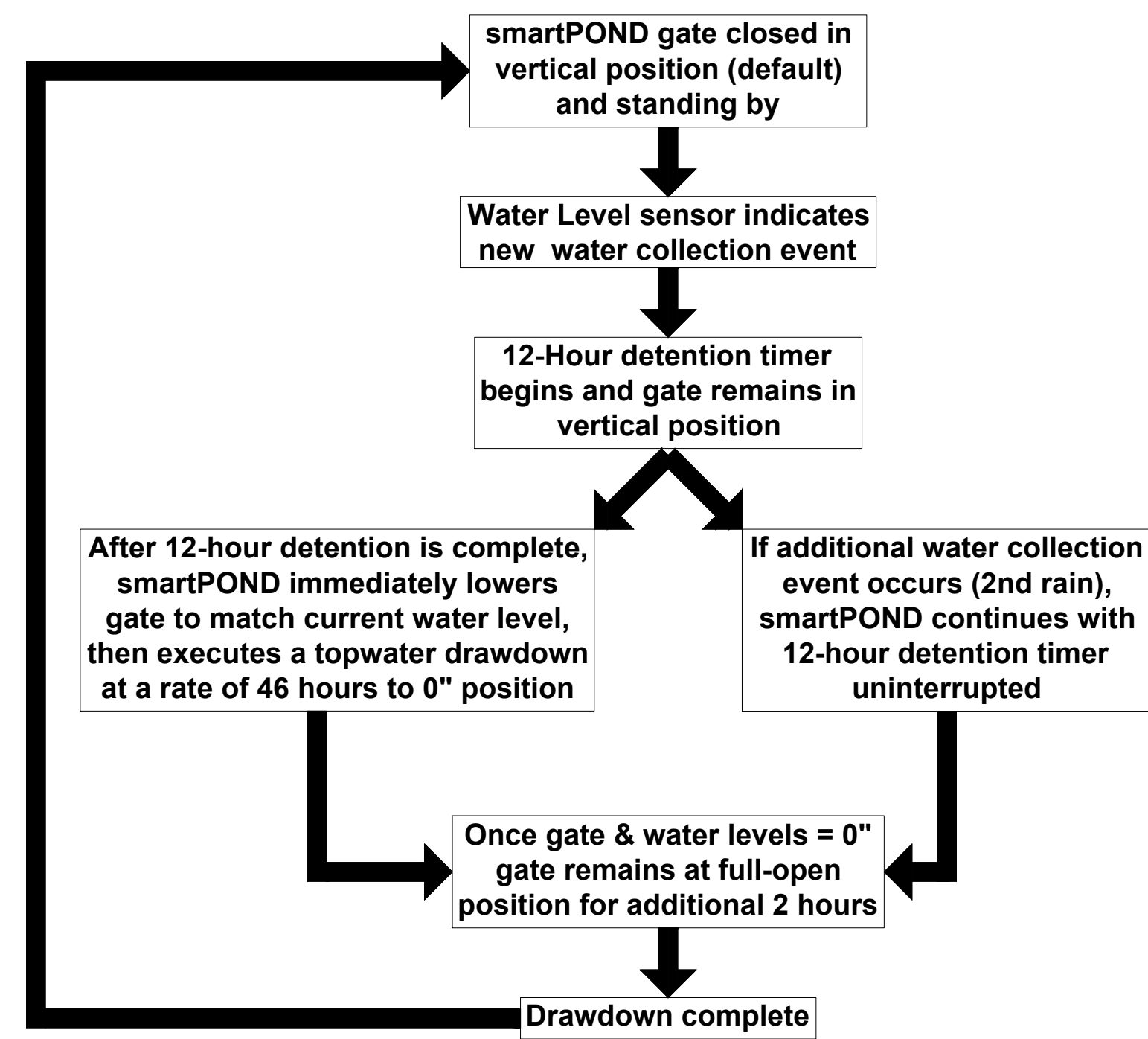
smartPOND
 Automated Stormwater Control.

FOR ADDITIONAL INFORMATION PLEASE CONTACT: CONSTRUCTION ECO SERVICES, 832-456-1000, www.ecosvs.com



DATE OF ISSUE: 7/27/22

PROGRAMMABLE LOGIC FLOW CHART



BLOCK DIAGRAM

