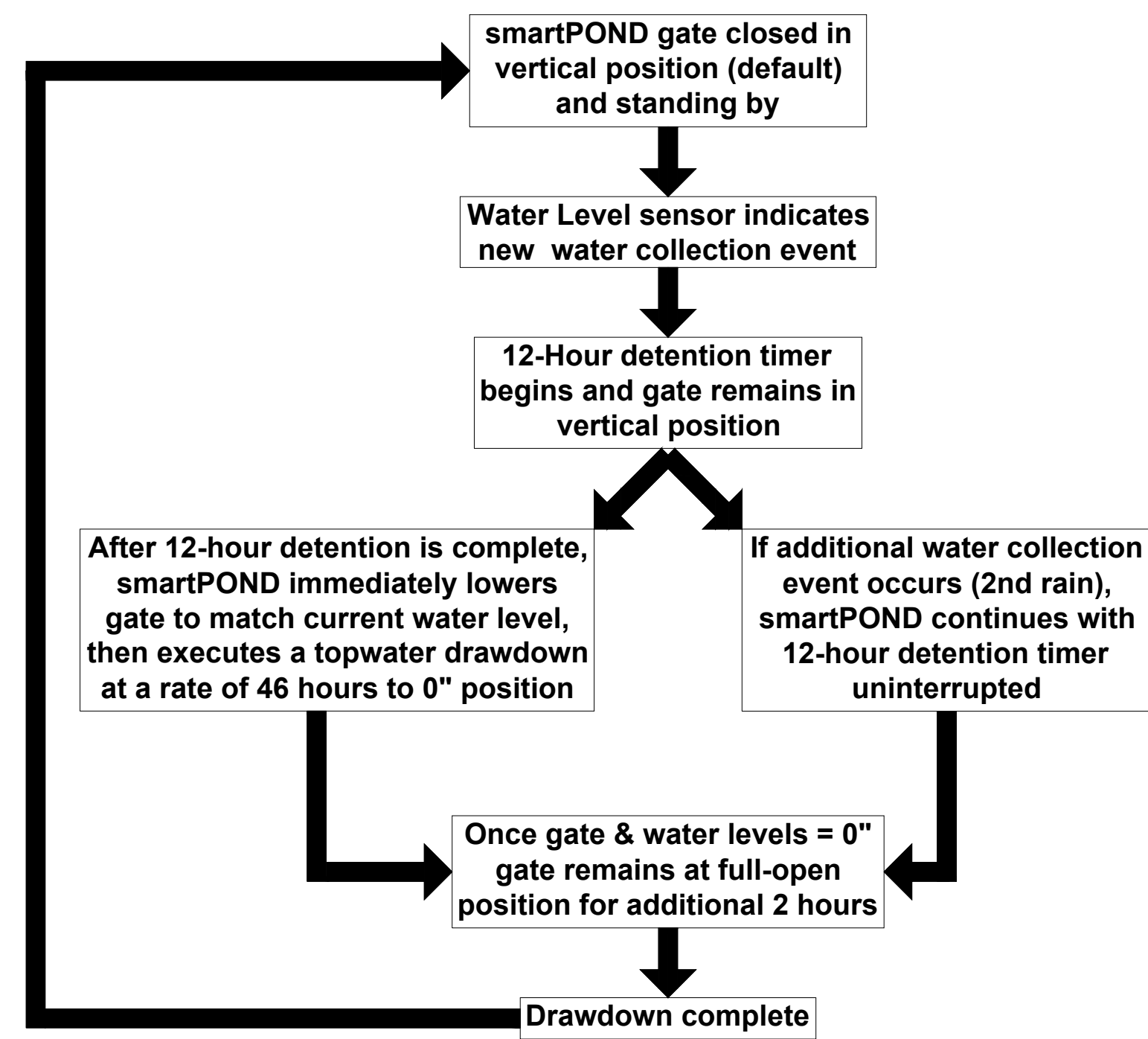
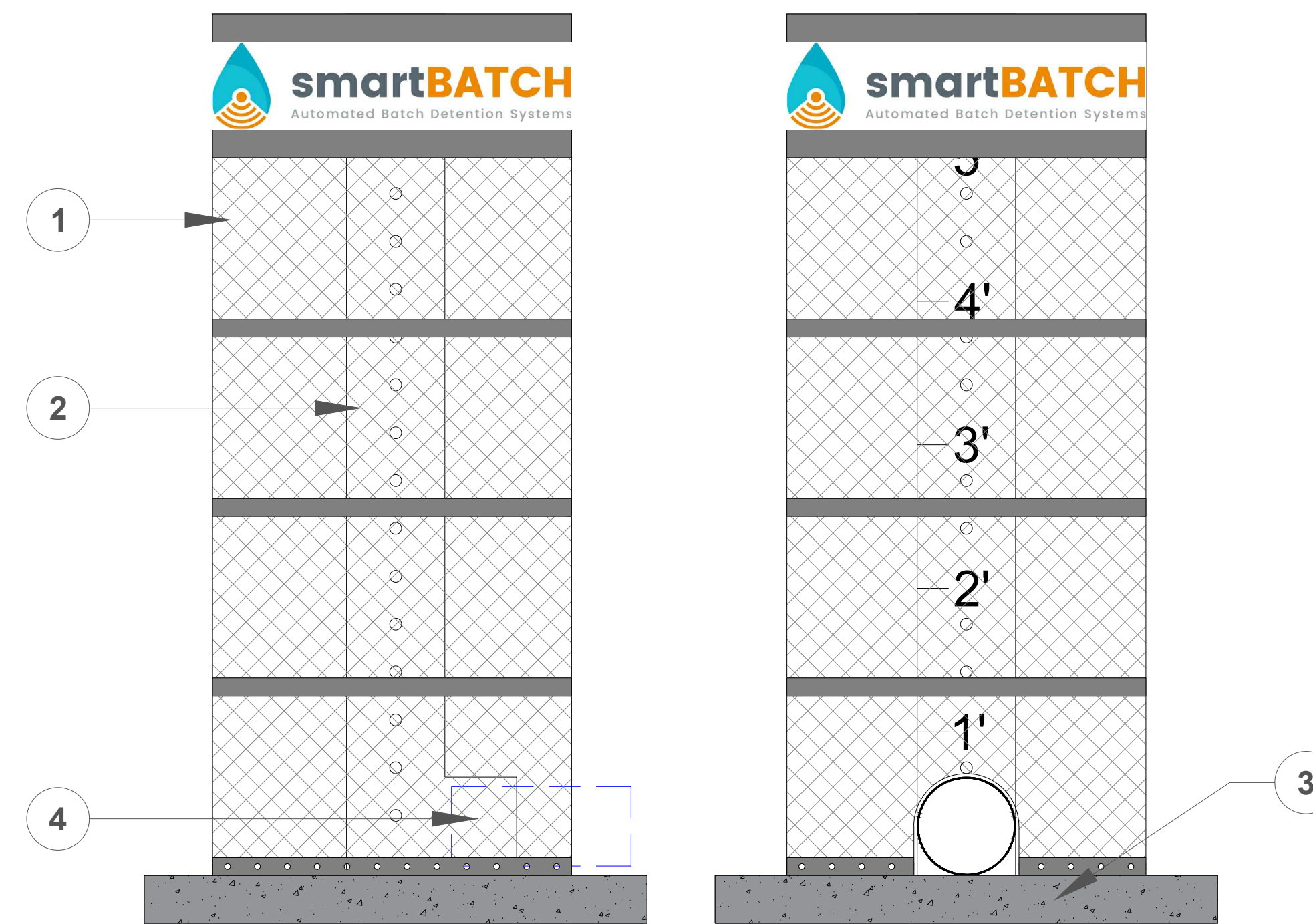


## PROGRAMMABLE LOGIC FLOW CHART

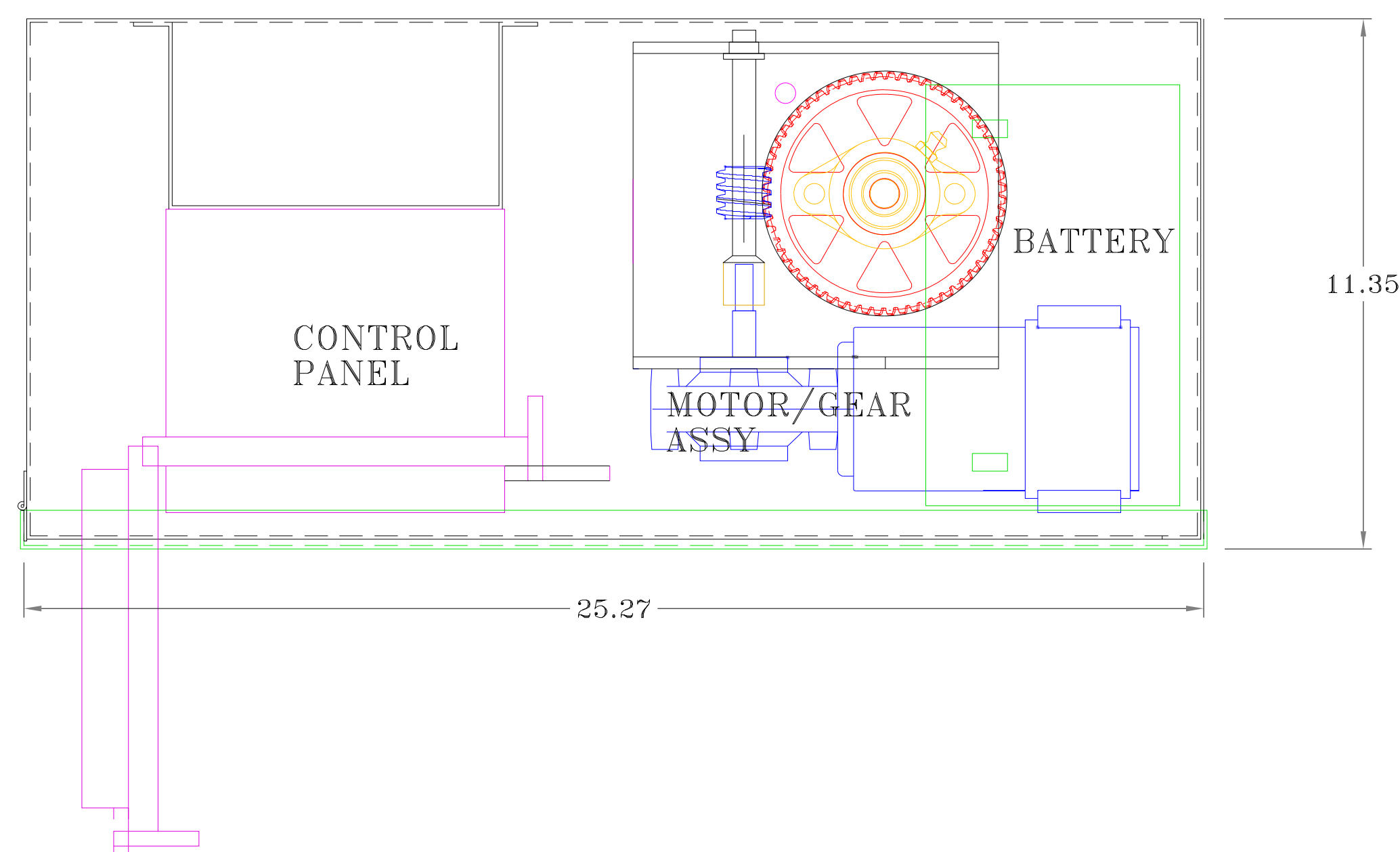


## TRASH CAGE WITH PERFORATED RISER PIPE

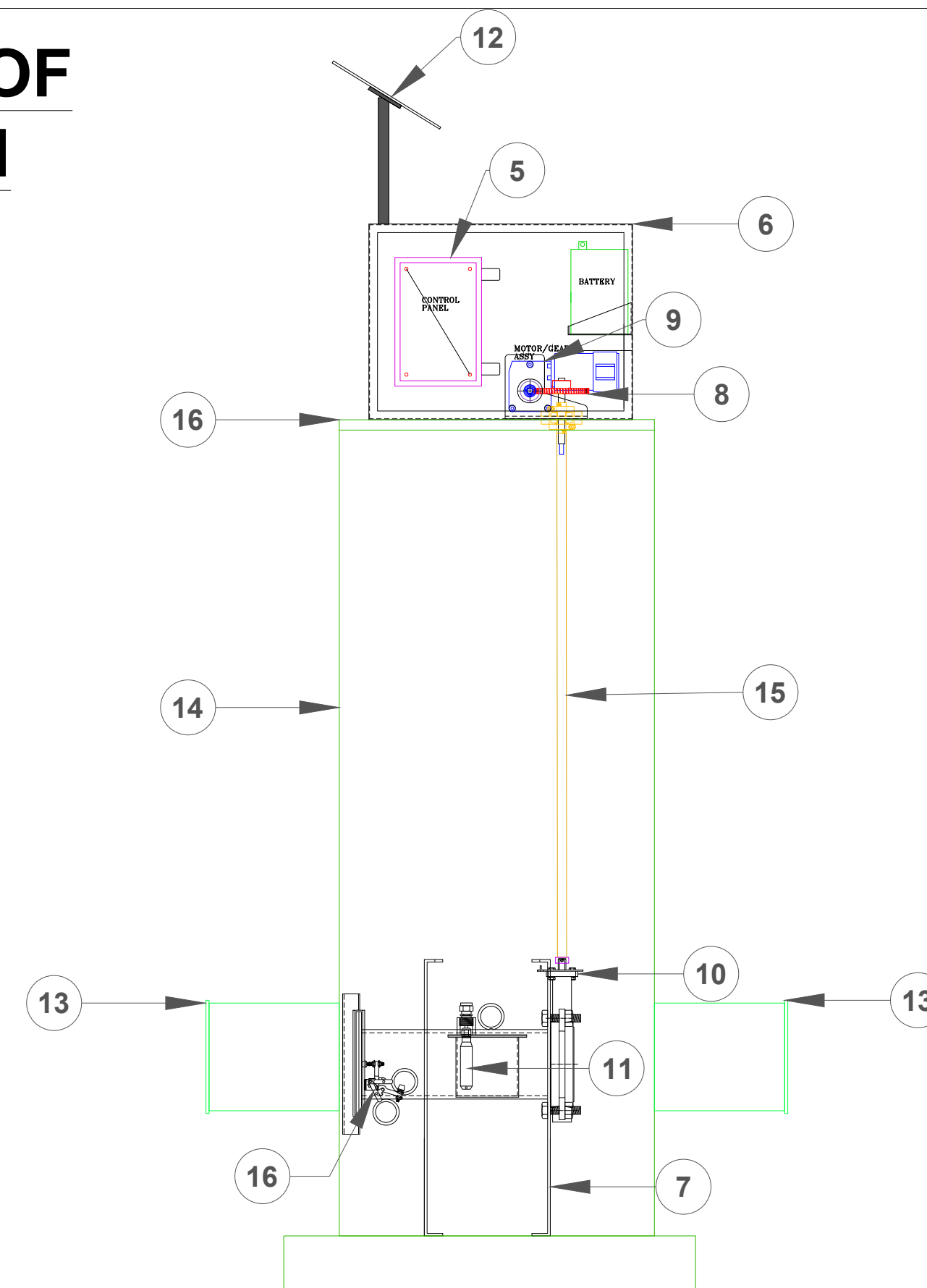


Parts List	
Item	smartPOND Valve Component
1	30" DIAMETER CAGE WITH 1 1/2" GALVANIZED MESH SCREEN
2	8" SQUARE PERFORATED TUBING WITH 1" PERFORATION, WITH 4" VERTICAL SPACING ON CENTERS WITH WATER DEPTH MARKER
3	3 1/2" X 3 1/2" X 4" CONCRETE PAD (BY OTHERS)
4	6" PVC OUTFALL PIPE (BY OTHERS)
5	WEATHERPROOF ELECTRONIC BOX
6	CONTROL BOX
7	PEDESTAL
8	ACTUATOR
9	MOTOR
10	6" VALVE
11	LEVEL TRANSDUCER
12	SOLAR PANEL
13	OUTLET PIPE (BY OTHERS)
14	30" DRAIN BASIN
15	VALVE STEM
16	QUICK DISCONNECT VALVE CONNECTION

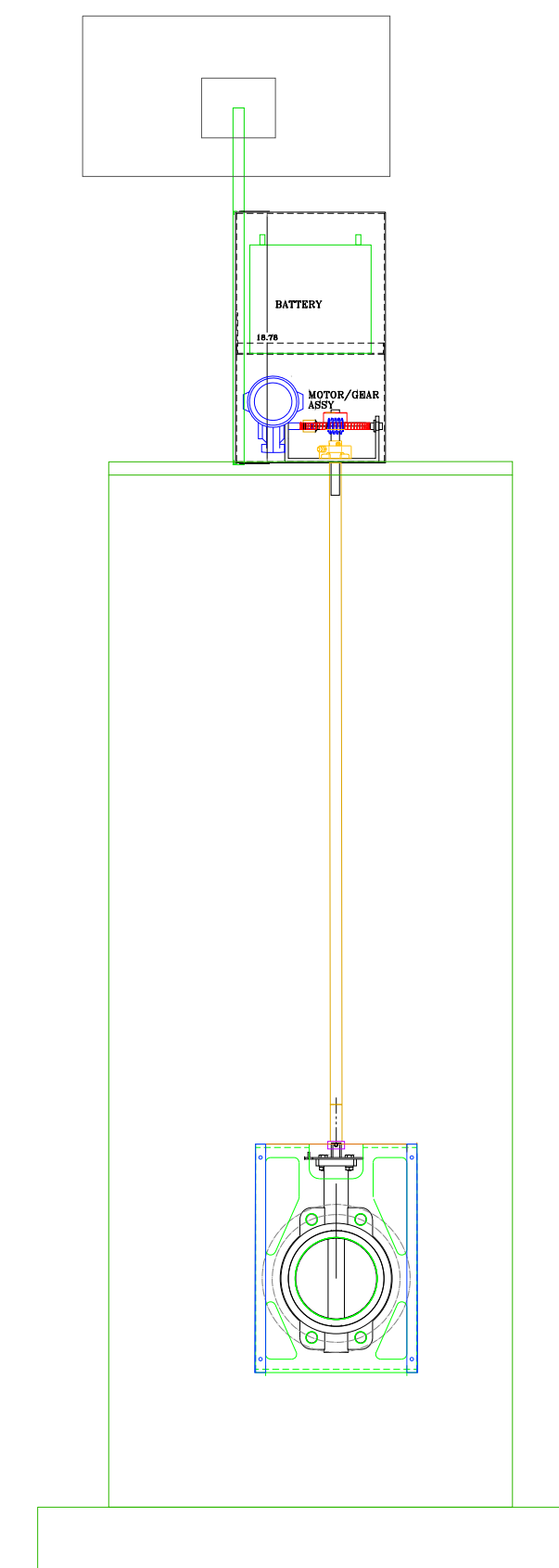
## PLAN VIEW OF ENCLOSER



## SECTION VIEW OF SMARTBATCH



## FRONT VIEW OF SMARTBATCH



**smartBATCH**  
Automated Batch Detention Systems

FOR ADDITIONAL INFORMATION PLEASE CONTACT: CONSTRUCTION ECO SERVICES, 832-456-1000, [www.ecosvs.com](http://www.ecosvs.com)

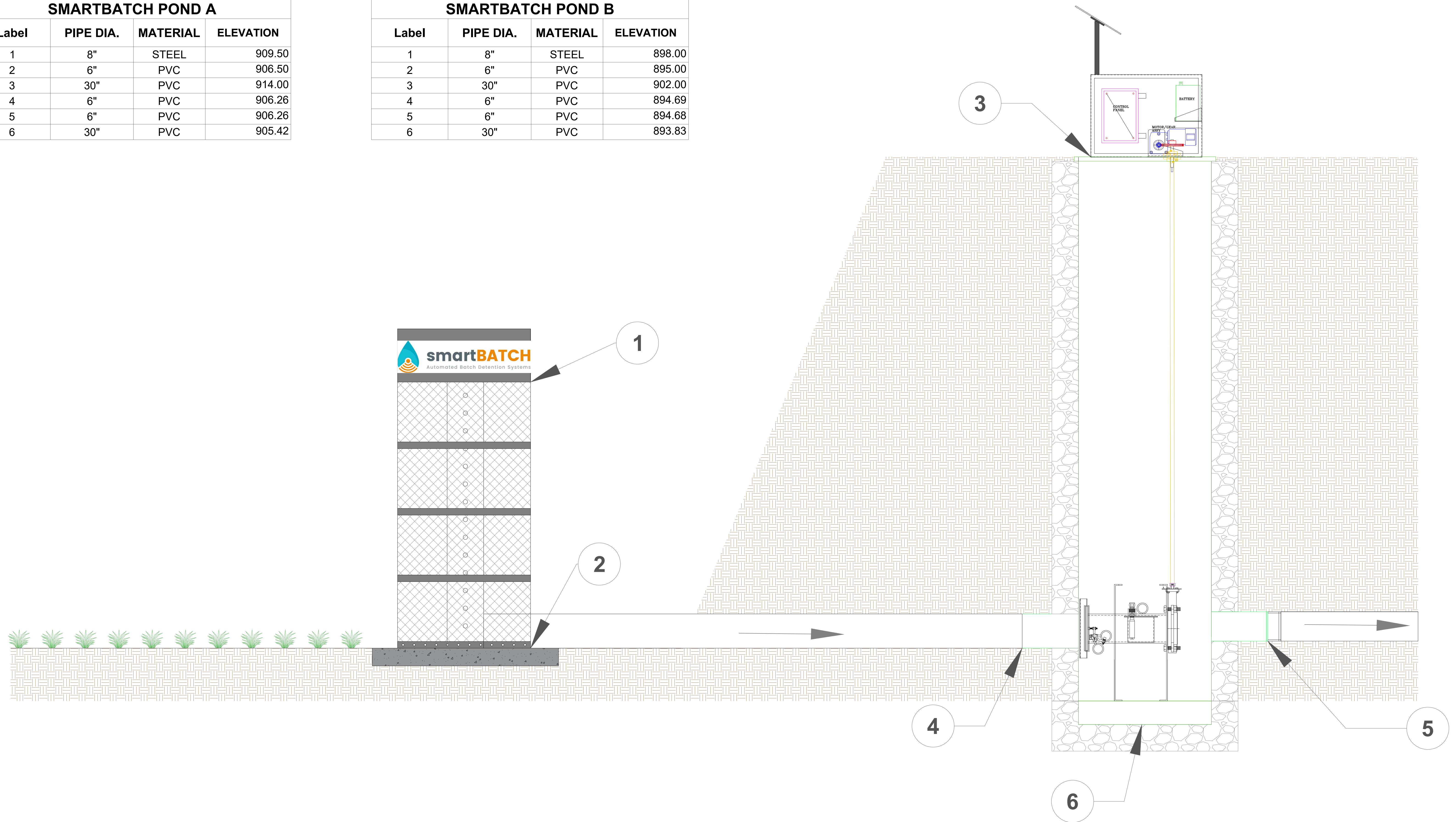
**CONVERGENT**  
WATER TECHNOLOGIES

**SMARTBATCH POND A**

Label	PIPE DIA.	MATERIAL	ELEVATION
1	8"	STEEL	909.50
2	6"	PVC	906.50
3	30"	PVC	914.00
4	6"	PVC	906.26
5	6"	PVC	906.26
6	30"	PVC	905.42

**SMARTBATCH POND B**

Label	PIPE DIA.	MATERIAL	ELEVATION
1	8"	STEEL	898.00
2	6"	PVC	895.00
3	30"	PVC	902.00
4	6"	PVC	894.69
5	6"	PVC	894.68
6	30"	PVC	893.83



**smartBATCH**  
Automated Batch Detention Systems

**CONVERGENT**  
WATER TECHNOLOGIES

FOR ADDITIONAL INFORMATION PLEASE CONTACT: CONSTRUCTION ECO SERVICES, 832-456-1000, [www.ecosvs.com](http://www.ecosvs.com)