

smartPOND Valve
Riser with Sediment
Measurement Marker

smartPOND Valve Trash Cage
(SEE DETAILS FOR MORE INFORMATION)

3.5' x 3.5' x 4" Concrete Pad
(By Others)

Solid Pipe to Control Structure

Solar Panel

smartPOND Valve
Weatherproof Enclosure Box

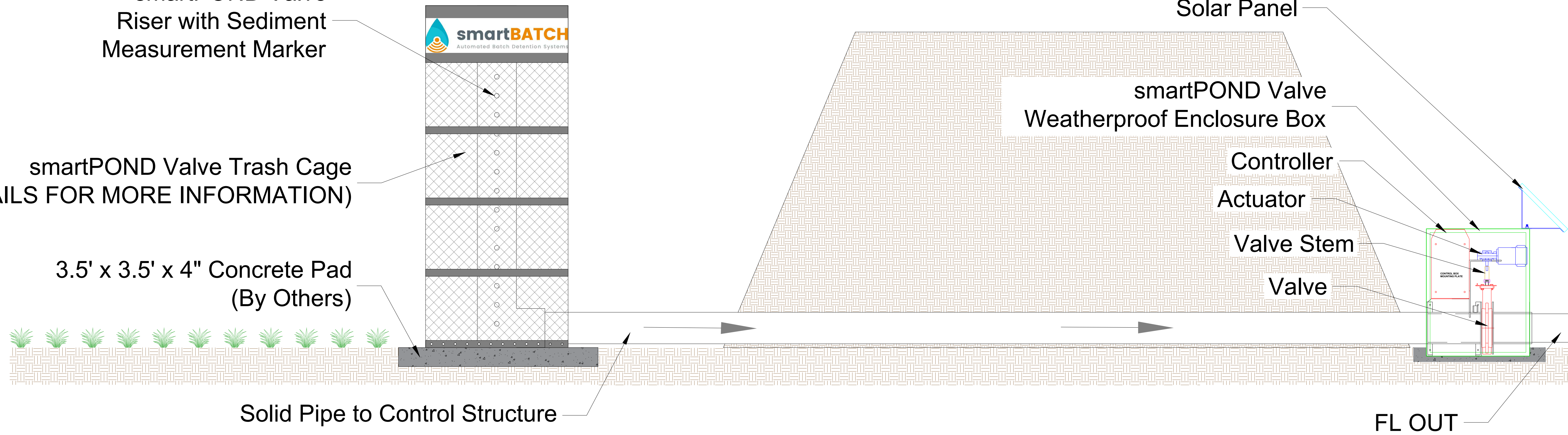
Controller

Actuator

Valve Stem

Valve

FL OUT



smartPOND Valve

with Berm

REVISION NO.

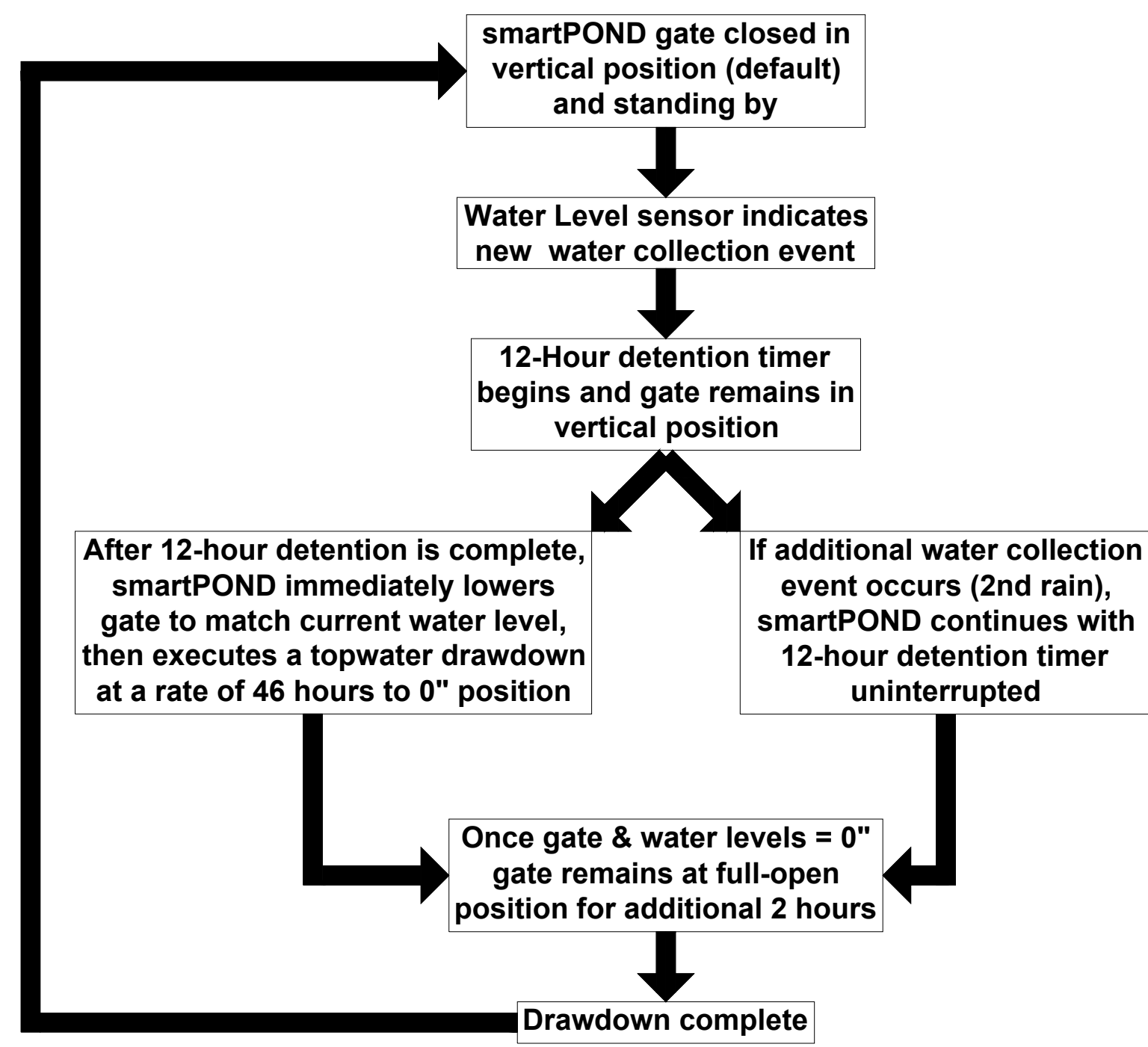
0

DATE

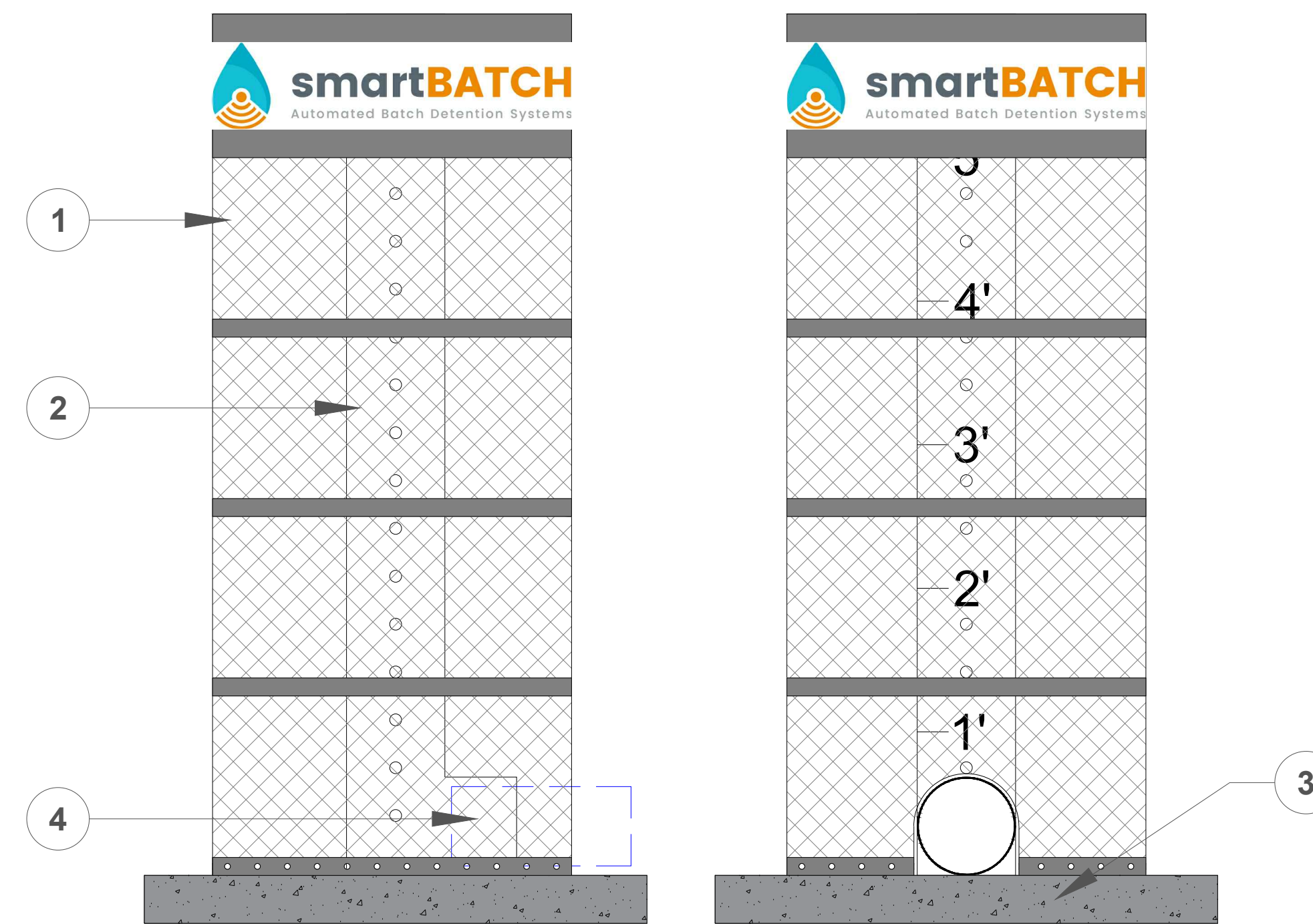
5/14/2019

SHEET NO.

PROGRAMMABLE LOGIC FLOW CHART

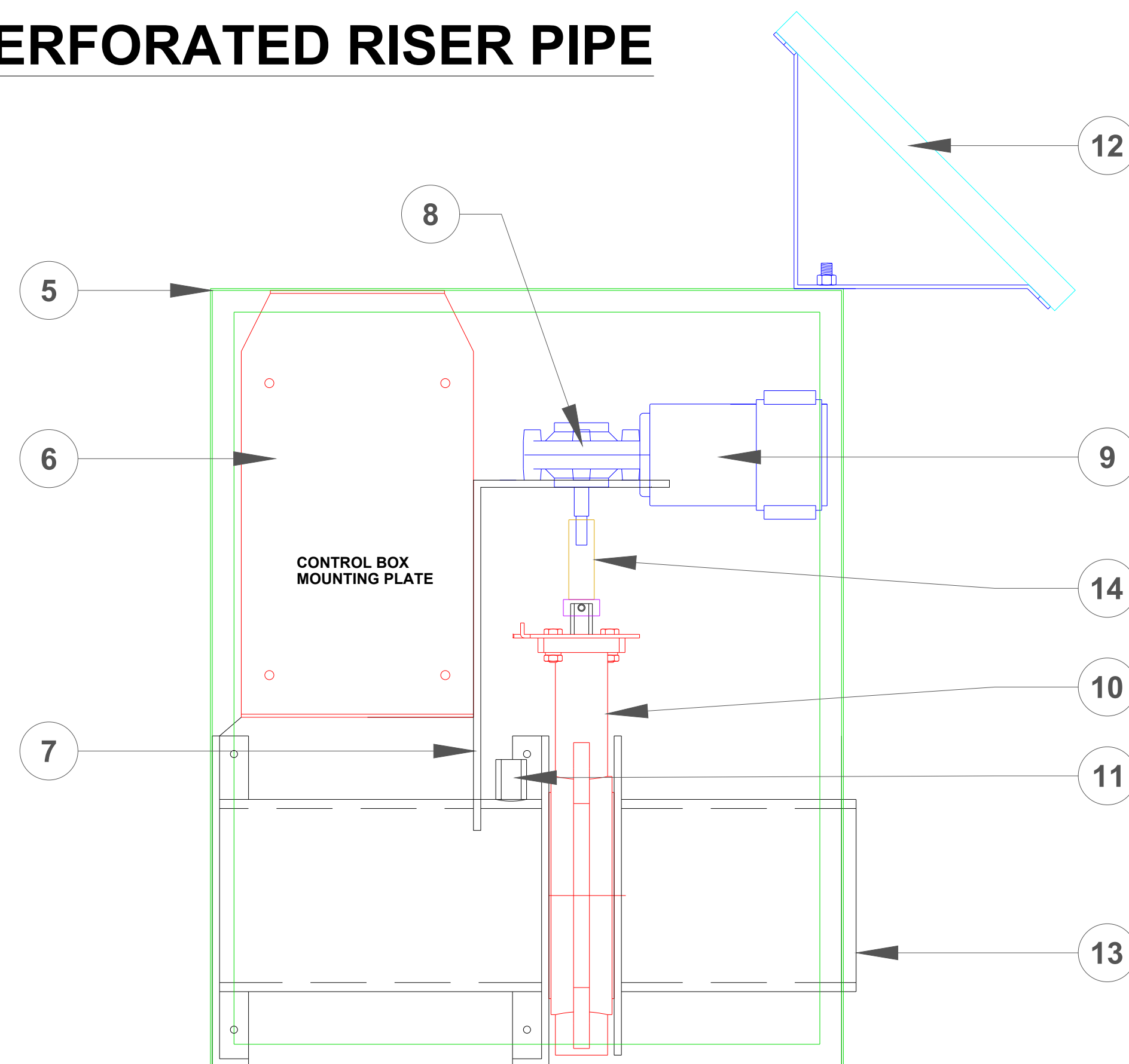


TRASH CAGE WITH PERFORATED RISER PIPE

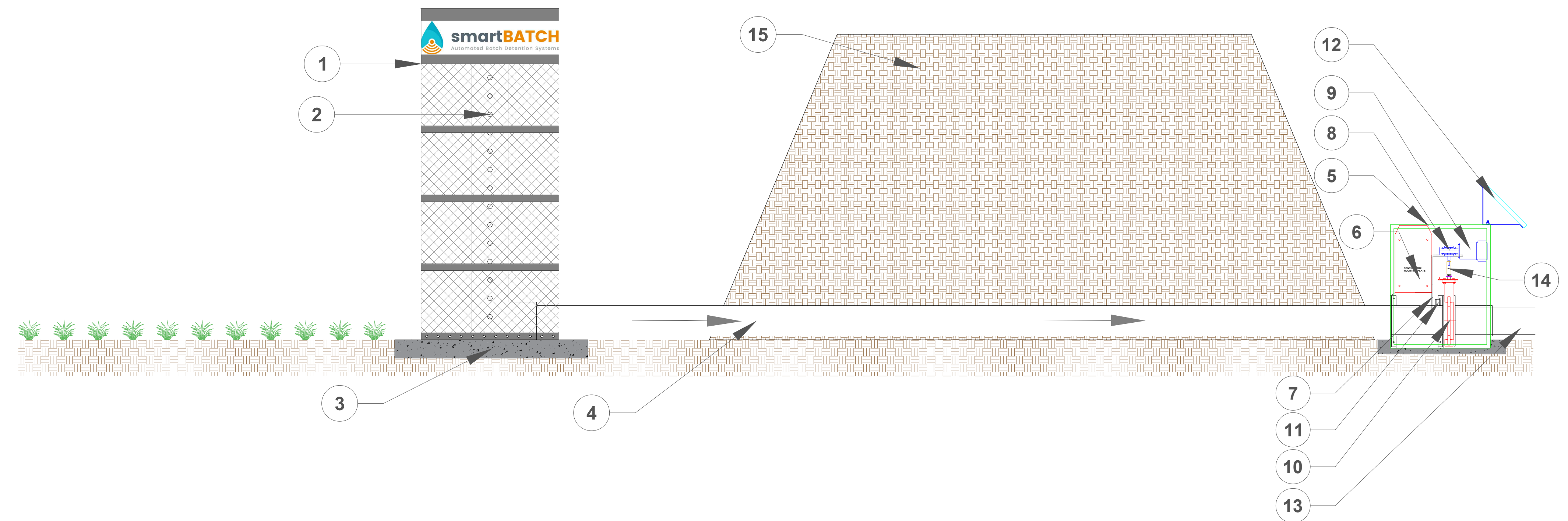


Parts List	
Item	smartPOND Valve Component
1	30" DIAMETER CAGE WITH 1 1/2" GALVANIZED MESH SCREEN
2	8" SQUARE PERFORATED TUBING WITH 1" PERFORATION, WITH 4" VERTICAL SPACING ON CENTERS WITH WATER DEPTH MARKER
3	3 1/2" X 3 1/2" X 4" CONCRETE PAD (BY OTHERS)
4	6" PVC OUTFALL PIPE (BY OTHERS)
5	WEATHERPROOF ELECTRONIC BOX
6	CONTROL BOX
7	PEDESTAL
8	ACTUATOR
9	MOTOR
10	6" VALVE
11	LEVEL TRANSDUCER
12	SOLAR PANEL
13	OUTLET PIPE (BY OTHERS)
14	VALVE STEM
15	BERM (BY OTHERS)

PERFORATED RISER PIPE



smartPOND Valve with Berm



CONSTRUCTION
ECO
SERVICES



smartPOND
Automated Stormwater Control.

FOR ADDITIONAL INFORMATION PLEASE CONTACT: CONSTRUCTION ECO SERVICES, 832-456-1000, www.ecosvs.com

CONVERGENT
WATER TECHNOLOGIES

smartPOND Valve SPECIFICATION

Continuously Monitored Automated Stormwater System with Valve

1. Introduction

The following specifications describe the components, general functions, and applications of a smartPOND Continuously Monitored Automated Stormwater System (C-MASS) with Valve. The system functions as an electronically controlled, solar powered stormwater management device, providing precision management capabilities and real-time data. Using sensors, solar power, an electronic actuator, and an internet-based control interface, the smartPOND valve connects to a specialized perforated riser inside the stormwater impoundment to enable managers to precisely control water retention and detention automatically or in real time.

2. smartPOND Valve Applications in Stormwater Management

The smartPOND valve is a device for active Stormwater management. As opposed to passive devices such as floating skimmers or stationary weirs, active water management dramatically increases the efficiency and effectiveness of a detention or retention pond. Where a passive stormwater detention system allows water to leave immediately upon collection, the smartPOND valve can detain newly caught Stormwater and allow it to settle for a programmed period before automatically dewatering the impoundment completely. For stormwater retention systems, it is possible to manage the treatment volume while maintaining a specified amount of capacity for flood storage or other use.

2.1 Pre-Programmed Control

Many functions can be pre-programmed without any human interactions, leaving the valve to automatically receive commands based on environmental conditions and respond as programmed.

2.1.1 Batch Detention Function for Stormwater Quality

The smartPOND valve meets TCEQ Batch Detention specifications for a 91% Total Suspended Solid removal rate. The function proceeds as follows. With the valve in the closed position and the impoundment dry, the system will stand by and wait for a water collection event. At the first sign of water collection, the unit will begin a 12-hour detention timer. At the end of the 12-hour detention period, the valve will open and release all of the water that has been collected. After the water level drops to 0", the valve will remain open for an additional 2 hours to facilitate final drainage, then return to the closed position to stand by for the next water collection event.

2.1.2 Predevelopment Hydrograph Function for Flood Control

The smartPOND valve predevelopment hydrograph function takes in site specific variables to determine a maximum release rate based on predevelopment conditions. The valve reads water depth in the pond every 15 minutes to determine the maximum release rate desirable to ensure the impoundment neither overtops, nor exceeds its maximum release based on predevelopment flows.

2.1.3 Hazmat Function for Spill Containment

smartPOND when specified for hazmat spill containment can be equipped with pollutant specific sensors that when triggered automatically close the valve until the command is overridden.

2.2 Real Time Monitoring

smartPOND comes standard with telemetry available on each unit and access to the user app available at no additional cost for 1 year. This option allows for real time monitoring of the unit and the data that comes along with it. From the real time monitoring app, a user can:

- Control the valve, either open or close
- See the water level
- See if trash or debris is surrounding the inlet
- Get maintenance alerts (Low Battery, Valve Failure, Etc.)
- Maintain specified water level

3. Components

The smartPOND valve may be implemented either above or below ground, and is comprised of the following components:

3.1 Hardware and Configuration

The standard smartPOND valve features a cast 6" valve. An extended spool and mounting flange on each side of the valve allows it to be attached to the outfall pipe in various configurations. The valve is actuated with an electric motor connected by an extendable drive shaft for underground applications.

For above ground applications, the entire system including all necessary components for operation assemble into one kit and are housed under a single lockable steel enclosure with the solar panel mounted on top. In this configuration, the unit can be installed on a stable, level pad and be bolted onto the back of the outfall pipe with six ¾" bolts and then switched to the "ON" position.

For underground applications, the valve is installed in a vault or concrete encasement as needed. An extended drive shaft connects between the underground valve and the rest of the components, including the motor and all electronics, which are housed in the lockable steel enclosure directly above ground.

3.2 Electronics and Software Specifications

- **Main board** - The main board of the smartPOND valve's electronics box serves as the main connection terminal for all sensors and additional control boards
- **Motor Controller Board** - The motor controller board of the smartPOND valve regulates the connection between the battery and the motor and receives inputs from the main board to control motor direction. It also powers the main board.
- **Motor** - The smartPOND valve's motor operates on 12-volts and has two wires connecting to the motor controller board. It is mounted on a bracket and connects to the directly to the valve with a driveshaft.
- **Battery** - The smartPOND valve is powered by a 12-volt, 30 amp/hour gel battery. Two terminals at the top connect the power wires to the motor controller board and the solar charge controller to the battery.
- **Solar Panel** - The solar panel of the smartPOND valve is 12-volts with 15 watt charging capability. It connects to a solar charge controller which regulates the voltage and current before connecting with two wires to the positive and negative battery terminals.
- **Sensors**
 - *Pressure Transducer* - The water level sensor is a pressure transducer sensor capable of staying submersed in water indefinitely. It mounts on the side of the smartPOND valve's center spool.
 - *Valve position sensor* - A proximity sensor senses the position of the valve's drive shaft in order to control and determine the position of the valve.
- **(Optional)**
 - *Cell data modem* - A cellular data modem will be required for real time control and alert options as well as predevelopment hydrograph functions.
 - *Hydrocarbon Sensor* - This optional sensor may be fitted to the smartPOND valve to perform specific functions based on the presence of hydrocarbon contamination.

4. Real Time Monitoring Interface (optional)

If the real time monitoring option is selected, the smartPOND valve may be monitored in real time through the Autoflow app. Live and historical data from each unit may be viewed in the app, as well as alerts (detailed in section 5).

4.1 Accessing unit data

To access live and historical data in the Autoflow app, select the unit of interest on the home page by clicking on the unit's name. From there, select the "Data" button, and the data page for that unit will be displayed.

4.2 Sending a command

To send a remote-control command to the SmartPOND valve, click the "Send New Command" button on the unit's home page. The unit's current position will be displayed at the top. To change the unit's position, simply select "OPEN" or "CLOSE". Within 1-3 minutes, the unit will move to the new position and update its status in the app.

5. Alerts

The smartPOND valve will indicate the following alerts by illuminating an exteriorly visible red LED light

- Low battery
- Loss of function
- Valve malfunction
- Hydrocarbon contamination (optional)

If the telemetry option is selected, the unit will upload the above alerts to the Autoflow app and notify the operator via text or email.

6. In Case of Failure

To bypass the smartPOND valve's normal automated functions and control the valve position in case of failure:

6.1 Removal of motor and manual direct control

In case of a total electronic or motor failure, the motor and motor bracket can be uninstalled together by removing the two bolts at the bottom of the motor bracket. With the motor and motor bracket removed, the output shaft on the butterfly valve can be manually controlled with a socket wrench, or any other tool that can grip the output shaft.

7. Additional Components List

7.1 Perforated Riser

The smartPOND valve system includes a stackable perforated steel riser which installs on the inlet side of the outfall pipe within the impoundment area. The perforated riser features an 8-inch steel perforated square tube within a 24" round steel mesh tube. At the bottom of the 8-inch square tube, there is a female threaded fitting for a six inch PVC outfall pipe to connect. The steel tube is perforated with 1-inch holes every 4" on center to the height of the impoundment.

7.2 Trash Cage

The trash cage attaches to the perforated riser with a coupling and calder pin. The trash cage will be comprised of steel banding and a 1.5" x 1.5" mesh to prevent floatable's and other contaminants from entering and clogging the perforated riser. The trash cage will sit 0.5" above the bottom of the impoundment to allow the last 0.5" out of the impoundment.

7.3 Valve Stem Extension

The drive shaft/valve stem of the smartPOND system may be extended to any length necessary for instances where the valve will be in an underground vault or manhole. The valve stem will connect the valve to the above ground controls.

8. Maintenance

8.1 Grease

The smartPOND valve includes a grease fitting on the valve itself which should be greased twice per year. It is also recommended that a thick, mildly heat-resistant grease be used to avoid grease melting out of the groove in warmer temperatures.

8.2 Flange Bolts

There are 6 bolts connecting the smartPOND valve's flange to the outfall pipe or fixture. During routine maintenance intervals, these bolts should be checked for tightness. All bolts should be tightened evenly.

8.3 Perforated Riser

Silt, sediment, and debris can build up around the perforated riser with time. An annual inspection of the unit is necessary to ensure that excess debris or sediment has not limited the drainage capacity of the perforated riser. To access the perforated riser for maintenance, lift the trash cage off of the riser, dig out any accumulated sediment, and clear all perforations.

8.4 Trash Cage

As a part of routine maintenance, it is advisable to remove trash and debris that has accumulated on the trash cage and properly dispose.

8.5 Solar Panel

On all inspection visits, it is necessary to confirm that the solar panel is facing south and is well secured. The solar panel is commonly utilized by birds and insects. It is important to keep the surface clean of bird litter, insect nests and debris in order to maintain optimal performance.

8.6 Battery

Over time, battery terminals may corrode. Check annually for corrosion and clean as needed. The battery should be replaced every 4 to 6 years.

8.7 Storage

The smartPOND valve is shipped in a near-fully assembled configuration and should be stored likewise. The systems are transported and stored on pallets and must remain secured via straps or steel bands to said pallet at all times. The solar panel is not installed at times of transport or storage and should not be installed until the unit is ready to begin operation. The battery may be stored inside the electronics box and if removed, should never be stored on a concrete surface.

9. Installation

The smartPOND valve can be installed in a near-completely assembled configuration. Only the solar panel should be removed during the installation process. There are several ways to install the smartPOND valve with the key being structured support.

9.1 Structural Support

If the smartPOND valve is mounted to a steel pipe in an above ground/fully assembled configuration, the weight of the unit may be supported by the steel pipe. For plastic or concrete pipes, it is recommended that the weight of the unit be supported by either a concrete pad or steel frame. For below ground installations, the upper unit (electronics and actuator) should be fastened to the surface of the concrete vault. For vault installations, see design details for standard vault design.

10. Important Safety Information and Warnings:

- Always keep hands clear of the valve and motor when unit is in operation.
- Turn the power switch off when doing any electrical work.
- Do not enter the water when the device is actively draining water
- Always use proper PPE and confined space protocol when servicing a valve beneath ground.

11. PRODUCTS

Manufacturer/Supplier/Reseller shall be an established stormwater company that has at least 5 installations of automated stormwater management devices that have been in use and functional for the past 3 or more years.

A. Acceptable smartPOND Valve

"smartBATCH" Automated Batch Detention System
 "smartPOND" Automated Detention System

B. Acceptable System Supplier

Convergent Water Technologies, Inc.
 (800)711-5428
 www.convergentwater.com

C. Authorized Value Added Reseller

Construction EcoServices
 (800)456-1000
 www.ecosvs.com

12. Quality Assurance and Performance Specifications

The quality of all system components and all other appurtenances and their assembly process shall be subject to inspection upon delivery of the system to the work site. Installation is to be performed only by skilled work people with satisfactory record of performance on earthworks, pipe, welding, chamber, or pond/landfill construction projects of comparable size and quality.

smartPOND
Automated Stormwater Control.



FOR ADDITIONAL INFORMATION PLEASE CONTACT:
 CONSTRUCTION ECO SERVICES
 832-456-1000
 www.ecosvs.com



smartPOND Valve

Specifications

REVISION NO.

0

DATE

5/14/2019

SHEET NO.

NOTE: ENGINEER OF RECORD TO REVIEW, APPROVE AND ENDORSE FINAL SITE SPECIFIC DESIGN.